



| | | |
|---------------------|---------|--------------------------|
| Light Output Ratio: | 100.0% | |
| Luminaire Power: | 80.42 W | |
| SHR Nominal: | 0.75 | Calculated using the TM5 |
| SHR Maximum: | 0.80 | fine grid method. |

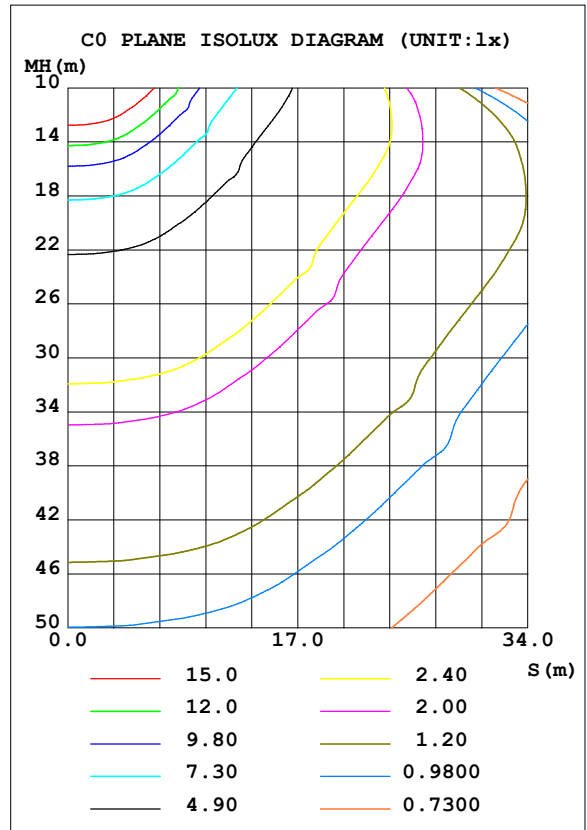
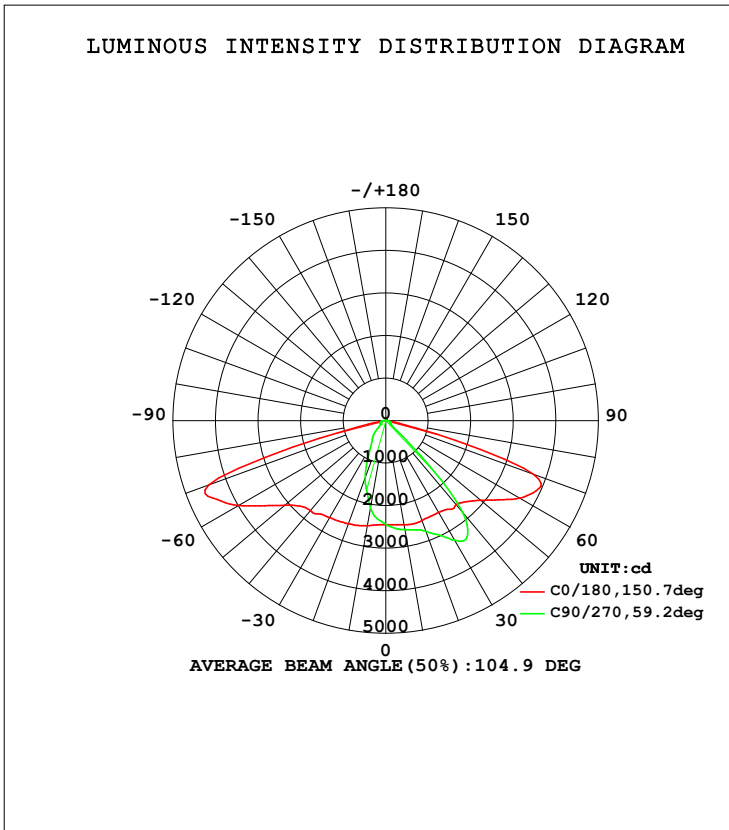
C Range: 0 - 360DEG
 C Interval: 15.0DEG
 Test Speed: HIGH
 Temperature: 25.3DEG
 Operators: ZZJ
 Test Date: 2014-12-18

γ Range: 0 - 180DEG
 γ Interval: 1.0DEG
 Test System: EVERFINE GO-2000B_V1 SYSTEM V2.0.291
 Humidity: 65.0%
 Test Distance: 7.610m [K=1.0775]
 Remarks:

LUMINAIRE PHOTOMETRIC TEST REPORT

| | | |
|---|---------------------|-------------------|
| Test:U:219.7V I:0.3787A P:80.42W PF:0.9666 Lamp Flux:8190.72x1 lm | | |
| NAME: LED Street Light | TYPE:LED | WEIGHT:6.9Kg |
| SPEC.:C470SP-Q2-P-03A 230V50HZ | DIM.: 576*300*107mm | SERIAL No.:1 |
| MFR.: AOK | SUR.:160mm*230mm | PROTECTION ANGLE: |

| DATA OF LAMP | | PHOTOMETRIC DATA Eff: 101.85 lm/W | | | |
|-------------------|-----------|-----------------------------------|--------|---------------------|-----------|
| MODEL | AOK-80WiL | I _{max} (cd) | 5404 | S/MH (C0/180) | 1.70 |
| NOMINAL POWER (W) | 80 | LOR (%) | 100.0 | S/MH (C90/270) | 0.71 |
| RATED VOLTAGE (V) | 220 | TOTAL FLUX (lm) | 8190.7 | η UP, DN (C0-180) | 0.1, 63.6 |
| NOMINAL FLUX (lm) | 8190.72 | CIE CLASS | DIRECT | η UP, DN (C180-360) | 0.2, 36.1 |
| LAMPS INSIDE | 1 | η up (%) | 0.3 | CIBSE SHR NOM | 0.75 |
| TEST VOLTAGE (V) | 220 | η down (%) | 99.7 | CIBSE SHR MAX | 0.80 |



C Range: 0 - 360DEG
 C Interval: 15.0DEG
 Test Speed: HIGH
 Temperature: 25.3DEG
 Operators: ZZJ
 Test Date: 2014-12-18

γ Range: 0 - 180DEG
 γ Interval: 1.0DEG
 Test System: EVERFINE GO-2000B_V1 SYSTEM V2.0.291
 Humidity: 65.0%
 Test Distance: 7.610m [K=1.0775]
 Remarks:

ZONAL FLUX DIAGRAM

ZONAL FLUX DIAGRAM:

| γ | C0 | C45 | C90 | C135 | C180 | C225 | C270 | C315 | γ | Φ zone | Φ total | %lum, lamp |
|----------|-----------------------|--------|--------|--------|--------|--------|--------|--------|----------|-------------|--------------|------------|
| 10 | 2488 | 2574 | 2603 | 2586 | 2507 | 2303 | 2081 | 2249 | 0- 10 | 232.4 | 232.4 | 2.84,2.84 |
| 20 | 2498 | 2656 | 2771 | 2700 | 2580 | 1946 | 1426 | 1896 | 10- 20 | 670.9 | 903.2 | 11,11 |
| 30 | 2494 | 2878 | 3244 | 2961 | 2636 | 1492 | 728.1 | 1448 | 20- 30 | 1056 | 1959 | 23.9,23.9 |
| 40 | 2575 | 3813 | 2816 | 3908 | 2760 | 759.0 | 464.4 | 763.2 | 30- 40 | 1441 | 3400 | 41.5,41.5 |
| 50 | 2918 | 4157 | 211.8 | 4480 | 3098 | 311.0 | 182.5 | 337.1 | 40- 50 | 1572 | 4972 | 60.7,60.7 |
| 60 | 3646 | 289.3 | 123.0 | 378.3 | 3995 | 134.9 | 148.1 | 141.7 | 50- 60 | 1422 | 6394 | 78.1,78.1 |
| 70 | 3699 | 106.5 | 105.3 | 105.4 | 4426 | 104.8 | 139.9 | 105.3 | 60- 70 | 1282 | 7677 | 93.7,93.7 |
| 80 | 150.8 | 69.58 | 56.08 | 67.27 | 173.4 | 71.79 | 92.36 | 70.54 | 70- 80 | 448.2 | 8125 | 99.2,99.2 |
| 90 | 1.218 | 0.3313 | 1.326 | 0.5483 | 0.5416 | 0.4970 | 1.954 | 0.3750 | 80- 90 | 43.02 | 8168 | 99.7,99.7 |
| 100 | 4.264 | 0.2392 | 0.8723 | 0.3498 | 2.903 | 0.3672 | 0.5179 | 0.3185 | 90-100 | 0.9807 | 8169 | 99.7,99.7 |
| 110 | 6.993 | 0.3676 | 2.946 | 0.4961 | 5.532 | 1.928 | 5.341 | 1.808 | 100-110 | 1.904 | 8171 | 99.8,99.8 |
| 120 | 8.203 | 0.8506 | 7.838 | 1.130 | 7.031 | 5.098 | 11.66 | 4.766 | 110-120 | 3.514 | 8174 | 99.8,99.8 |
| 130 | 7.452 | 1.834 | 3.764 | 2.219 | 7.025 | 6.273 | 6.456 | 6.609 | 120-130 | 4.118 | 8178 | 99.8,99.8 |
| 140 | 6.619 | 3.003 | 4.583 | 3.219 | 6.401 | 6.445 | 9.573 | 7.451 | 130-140 | 3.928 | 8182 | 99.9,99.9 |
| 150 | 6.269 | 4.021 | 4.127 | 3.968 | 6.056 | 7.331 | 7.982 | 7.434 | 140-150 | 3.502 | 8186 | 99.9,99.9 |
| 160 | 6.154 | 4.875 | 4.493 | 4.871 | 6.029 | 6.889 | 7.464 | 7.057 | 150-160 | 2.692 | 8188 | 100,100 |
| 170 | 6.233 | 5.730 | 5.608 | 5.924 | 6.127 | 6.579 | 6.942 | 6.871 | 160-170 | 1.726 | 8190 | 100,100 |
| 180 | 6.291 | 6.380 | 6.468 | 6.517 | 6.291 | 6.375 | 6.468 | 6.526 | 170-180 | 0.6062 | 8191 | 100,100 |
| DEG | LUMINOUS INTENSITY:cd | | | | | | | | | UNIT:lm | | |

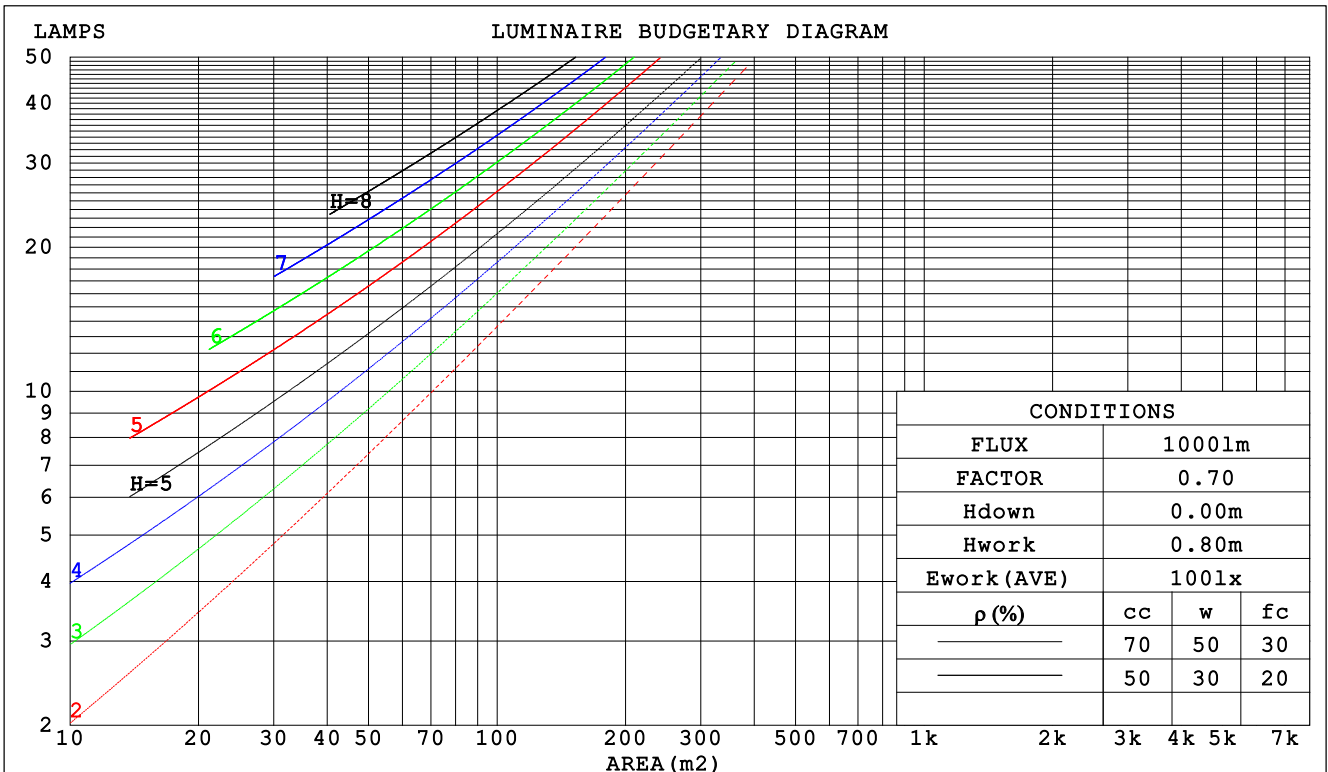
C Range: 0 - 360DEG
 C Interval: 15.0DEG
 Test Speed: HIGH
 Temperature:25.3DEG
 Operators:ZZJ
 Test Date:2014-12-18

γ Range: 0 - 180DEG
 γ Interval: 1.0DEG
 Test System:EVERFINE GO-2000B_V1 SYSTEM V2.0.291
 Humidity:65.0%
 Test Distance:7.610m [K=1.0775]
 Remarks:

CU AND LUMINAIRE BUDGETARY ESTIMATE DIAGRAM

| | | |
|---|---------------------|-------------------|
| Test:U:219.7V I:0.3787A P:80.42W PF:0.9666 Lamp Flux:8190.72x1 lm | | |
| NAME: LED Street Light | TYPE:LED | WEIGHT:6.9Kg |
| SPEC.:C470SP-Q2-P-03A 230V50HZ | DIM.: 576*300*107mm | SERIAL No.:1 |
| MFR.: AOK | SUR.:160mm*230mm | PROTECTION ANGLE: |

| ρcc | 80% | | | 70% | | | 50% | | | 30% | | | 10% | | | 0 |
|------|---------------------------------|------|------|------|------|------|------|------|------|------|------|------|------|------|------|-----|
| ρw | 50% | 30% | 10% | 50% | 30% | 10% | 50% | 30% | 10% | 50% | 30% | 10% | 50% | 30% | 10% | 0 |
| ρfc | 20% | | | 20% | | | 20% | | | 20% | | | 20% | | | 0 |
| RCR | RCR:Room Cavity Ratio | | | | | | | | | | | | | | | |
| | Coefficients of Utilization(CU) | | | | | | | | | | | | | | | |
| 0.0 | 1.19 | 1.19 | 1.19 | 1.16 | 1.16 | 1.16 | 1.11 | 1.11 | 1.11 | 1.06 | 1.06 | 1.06 | 1.02 | 1.02 | 1.02 | .00 |
| 1.0 | 1.04 | 1.00 | .96 | 1.02 | .98 | .95 | .98 | .95 | .92 | .94 | .91 | .89 | .90 | .88 | .86 | .84 |
| 2.0 | .91 | .84 | .78 | .89 | .82 | .77 | .85 | .80 | .75 | .82 | .77 | .73 | .79 | .75 | .72 | .70 |
| 3.0 | .79 | .71 | .64 | .77 | .70 | .64 | .74 | .68 | .62 | .72 | .66 | .61 | .69 | .64 | .60 | .58 |
| 4.0 | .70 | .61 | .54 | .68 | .60 | .53 | .66 | .58 | .53 | .63 | .57 | .52 | .61 | .56 | .51 | .49 |
| 5.0 | .62 | .52 | .46 | .61 | .52 | .45 | .58 | .51 | .45 | .56 | .50 | .44 | .54 | .49 | .44 | .42 |
| 6.0 | .55 | .46 | .39 | .54 | .46 | .39 | .52 | .45 | .39 | .51 | .44 | .39 | .49 | .43 | .38 | .36 |
| 7.0 | .50 | .41 | .35 | .49 | .40 | .34 | .47 | .40 | .34 | .46 | .39 | .34 | .44 | .38 | .34 | .31 |
| 8.0 | .45 | .37 | .31 | .45 | .36 | .30 | .43 | .36 | .30 | .42 | .35 | .30 | .41 | .34 | .30 | .28 |
| 9.0 | .41 | .33 | .27 | .41 | .33 | .27 | .40 | .32 | .27 | .38 | .32 | .27 | .37 | .31 | .27 | .25 |
| 10.0 | .38 | .30 | .25 | .37 | .30 | .24 | .36 | .29 | .24 | .35 | .29 | .24 | .35 | .28 | .24 | .22 |



C Range: 0 - 360DEG
 C Interval: 15.0DEG
 Test Speed: HIGH
 Temperature:25.3DEG
 Operators:ZZJ
 Test Date:2014-12-18

γ Range: 0 - 180DEG
 γ Interval: 1.0DEG
 Test System:EVERFINE GO-2000B_V1 SYSTEM V2.0.291
 Humidity:65.0%
 Test Distance:7.610m [K=1.0775]
 Remarks:

WEC AND CCEC

| | | |
|---|---------------------|-------------------|
| Test:U:219.7V I:0.3787A P:80.42W PF:0.9666 Lamp Flux:8190.72x1 lm | | |
| NAME: LED Street Light | TYPE:LED | WEIGHT:6.9Kg |
| SPEC.:C470SP-Q2-P-03A 230V50HZ | DIM.: 576*300*107mm | SERIAL No.:1 |
| MFR.: AOK | SUR.:160mm*230mm | PROTECTION ANGLE: |

| ρcc | 80% | | | 70% | | | 50% | | | 30% | | | 10% | | | 0 |
|------|-----------------------|------|------|------|------|------|----------------------------------|------|------|------|------|------|------|------|------|---|
| ρw | 50% | 30% | 10% | 50% | 30% | 10% | 50% | 30% | 10% | 50% | 30% | 10% | 50% | 30% | 10% | 0 |
| ρfc | 20% | | | 20% | | | 20% | | | 20% | | | 20% | | | 0 |
| RCR | RCR:Room Cavity Ratio | | | | | | Wall Exitance Coefficients (WEC) | | | | | | | | | |
| 0.0 | | | | | | | | | | | | | | | | |
| 1.0 | .300 | .170 | .054 | .293 | .167 | .053 | .279 | .160 | .051 | .267 | .154 | .049 | .256 | .148 | .048 | |
| 2.0 | .290 | .159 | .049 | .284 | .156 | .048 | .272 | .151 | .047 | .261 | .146 | .046 | .251 | .142 | .045 | |
| 3.0 | .272 | .145 | .043 | .266 | .143 | .043 | .256 | .139 | .042 | .246 | .135 | .041 | .237 | .131 | .041 | |
| 4.0 | .253 | .131 | .039 | .248 | .130 | .038 | .238 | .126 | .038 | .230 | .123 | .037 | .221 | .120 | .037 | |
| 5.0 | .234 | .119 | .035 | .230 | .118 | .034 | .221 | .115 | .034 | .214 | .113 | .034 | .206 | .110 | .033 | |
| 6.0 | .217 | .109 | .031 | .214 | .108 | .031 | .206 | .106 | .031 | .199 | .103 | .030 | .193 | .101 | .030 | |
| 7.0 | .202 | .100 | .028 | .199 | .099 | .028 | .192 | .097 | .028 | .186 | .095 | .028 | .180 | .094 | .028 | |
| 8.0 | .189 | .092 | .026 | .186 | .092 | .026 | .180 | .090 | .026 | .174 | .088 | .025 | .169 | .087 | .025 | |
| 9.0 | .177 | .086 | .024 | .174 | .085 | .024 | .169 | .084 | .024 | .164 | .082 | .024 | .159 | .081 | .023 | |
| 10.0 | .166 | .080 | .022 | .164 | .079 | .022 | .159 | .078 | .022 | .155 | .077 | .022 | .150 | .076 | .022 | |

| ρcc | 80% | | | 70% | | | 50% | | | 30% | | | 10% | | | 0 |
|------|-----------------------|------|------|------|------|------|---|------|------|------|------|------|------|------|------|---|
| ρw | 50% | 30% | 10% | 50% | 30% | 10% | 50% | 30% | 10% | 50% | 30% | 10% | 50% | 30% | 10% | 0 |
| ρfc | 20% | | | 20% | | | 20% | | | 20% | | | 20% | | | 0 |
| RCR | RCR:Room Cavity Ratio | | | | | | Ceiling Cavity Exitance Coefficients (CCEC) | | | | | | | | | |
| 0.0 | .193 | .193 | .193 | .165 | .165 | .165 | .112 | .112 | .112 | .065 | .065 | .065 | .021 | .021 | .021 | |
| 1.0 | .182 | .158 | .137 | .156 | .136 | .118 | .106 | .094 | .082 | .061 | .054 | .048 | .020 | .017 | .015 | |
| 2.0 | .174 | .134 | .100 | .149 | .115 | .087 | .102 | .080 | .061 | .059 | .046 | .035 | .019 | .015 | .012 | |
| 3.0 | .167 | .116 | .076 | .143 | .100 | .066 | .098 | .070 | .046 | .057 | .041 | .027 | .018 | .013 | .009 | |
| 4.0 | .160 | .103 | .060 | .137 | .089 | .052 | .094 | .062 | .037 | .055 | .036 | .022 | .018 | .012 | .007 | |
| 5.0 | .153 | .093 | .049 | .131 | .080 | .042 | .090 | .056 | .030 | .052 | .033 | .018 | .017 | .011 | .006 | |
| 6.0 | .146 | .085 | .041 | .125 | .073 | .036 | .086 | .051 | .025 | .050 | .030 | .015 | .016 | .010 | .005 | |
| 7.0 | .139 | .078 | .035 | .120 | .067 | .030 | .083 | .047 | .022 | .048 | .028 | .013 | .016 | .009 | .004 | |
| 8.0 | .133 | .072 | .030 | .114 | .062 | .027 | .079 | .044 | .019 | .046 | .026 | .011 | .015 | .008 | .004 | |
| 9.0 | .126 | .067 | .027 | .109 | .058 | .024 | .075 | .041 | .017 | .044 | .024 | .010 | .014 | .008 | .003 | |
| 10.0 | .121 | .063 | .024 | .104 | .055 | .021 | .072 | .038 | .015 | .042 | .023 | .009 | .014 | .007 | .003 | |

C Range: 0 - 360DEG
 C Interval: 15.0DEG
 Test Speed: HIGH
 Temperature:25.3DEG
 Operators:ZZJ
 Test Date:2014-12-18

γ Range: 0 - 180DEG
 γ Interval: 1.0DEG
 Test System:EVERFINE GO-2000B_V1 SYSTEM V2.0.291
 Humidity:65.0%
 Test Distance:7.610m [K=1.0775]
 Remarks:

UGR(Unified Glare Rating) Table

| | | |
|---|---------------------|-------------------|
| Test:U:219.7V I:0.3787A P:80.42W PF:0.9666 Lamp Flux:8190.72x1 lm | | |
| NAME: LED Street Light | TYPE:LED | WEIGHT:6.9Kg |
| SPEC.:C470SP-Q2-P-03A 230V50HZ | DIM.: 576*300*107mm | SERIAL No.:1 |
| MFR.: AOK | SUR.:160mm*230mm | PROTECTION ANGLE: |

| | | | | | | | | | | |
|--|------------------|------|------|------|------|----------------|------|------|------|------|
| ceiling/cavity | 0.7 | 0.7 | 0.5 | 0.5 | 0.3 | 0.7 | 0.7 | 0.5 | 0.5 | 0.3 |
| walls | 0.5 | 0.3 | 0.5 | 0.3 | 0.3 | 0.5 | 0.3 | 0.5 | 0.3 | 0.3 |
| working plane | 0.2 | 0.2 | 0.2 | 0.2 | 0.2 | 0.2 | 0.2 | 0.2 | 0.2 | 0.2 |
| Room dimensions | Viewed crosswise | | | | | Viewed endwise | | | | |
| x = 2H y = 2H | 31.3 | 32.9 | 31.6 | 33.1 | 33.3 | 22.3 | 23.9 | 22.6 | 24.1 | 24.3 |
| 3H | 34.0 | 35.4 | 34.3 | 35.7 | 35.9 | 22.2 | 23.6 | 22.5 | 23.9 | 24.1 |
| 4H | 34.2 | 35.6 | 34.5 | 35.8 | 36.1 | 22.1 | 23.5 | 22.4 | 23.7 | 24.0 |
| 6H | 34.1 | 35.4 | 34.5 | 35.7 | 36.0 | 22.1 | 23.4 | 22.4 | 23.6 | 23.9 |
| 8H | 34.1 | 35.3 | 34.4 | 35.6 | 35.9 | 22.1 | 23.3 | 22.4 | 23.6 | 23.9 |
| 12H | 34.0 | 35.2 | 34.4 | 35.5 | 35.8 | 22.0 | 23.2 | 22.4 | 23.5 | 23.8 |
| 4H 2H | 31.2 | 32.6 | 31.5 | 32.8 | 33.1 | 24.5 | 25.9 | 24.8 | 26.1 | 26.4 |
| 3H | 33.8 | 35.0 | 34.2 | 35.3 | 35.6 | 24.4 | 25.5 | 24.7 | 25.8 | 26.2 |
| 4H | 34.1 | 35.2 | 34.5 | 35.5 | 35.8 | 24.3 | 25.4 | 24.7 | 25.7 | 26.0 |
| 6H | 34.0 | 35.0 | 34.4 | 35.3 | 35.7 | 24.3 | 25.2 | 24.7 | 25.6 | 25.9 |
| 8H | 34.0 | 34.8 | 34.4 | 35.2 | 35.6 | 24.2 | 25.1 | 24.7 | 25.5 | 25.9 |
| 12H | 33.9 | 34.7 | 34.4 | 35.1 | 35.5 | 24.2 | 25.0 | 24.7 | 25.4 | 25.8 |
| 8H 4H | 33.9 | 34.8 | 34.4 | 35.2 | 35.6 | 24.5 | 25.4 | 24.9 | 25.7 | 26.1 |
| 6H | 33.9 | 34.6 | 34.3 | 35.0 | 35.5 | 24.5 | 25.2 | 24.9 | 25.6 | 26.0 |
| 8H | 33.8 | 34.5 | 34.3 | 34.9 | 35.4 | 24.5 | 25.1 | 24.9 | 25.6 | 26.0 |
| 12H | 33.8 | 34.4 | 34.3 | 34.8 | 35.3 | 24.5 | 25.0 | 25.0 | 25.5 | 26.0 |
| 12H 4H | 33.9 | 34.7 | 34.3 | 35.1 | 35.5 | 24.4 | 25.2 | 24.9 | 25.6 | 26.0 |
| 6H | 33.8 | 34.5 | 34.3 | 34.9 | 35.4 | 24.4 | 25.1 | 24.9 | 25.5 | 26.0 |
| 8H | 33.8 | 34.4 | 34.3 | 34.8 | 35.3 | 24.5 | 25.0 | 24.9 | 25.5 | 25.9 |
| Variations with the observer position at spacings: | | | | | | | | | | |
| S = 1.0H | + 0.2 / - 0.5 | | | | | + 2.3 / - 8.3 | | | | |
| 1.5H | + 1.3 / - 1.0 | | | | | + 2.3 / - 6.8 | | | | |
| 2.0H | + 1.8 / - 3.1 | | | | | + 4.1 / - 7.3 | | | | |

CIE Pub.117 Corrected 8191 lm Total Lamp Luminous Flux. (8log(F/F0) = 7.3)

C Range: 0 - 360DEG
 C Interval: 15.0DEG
 Test Speed: HIGH
 Temperature:25.3DEG
 Operators:ZZJ
 Test Date:2014-12-18

γ Range: 0 - 180DEG
 γ Interval: 1.0DEG
 Test System:EVERFINE GO-2000B_V1 SYSTEM V2.0.291
 Humidity:65.0%
 Test Distance:7.610m [K=1.0775]
 Remarks:

UTILIZATION FACTORS TABLE

| | | |
|---|---------------------|-------------------|
| Test:U:219.7V I:0.3787A P:80.42W PF:0.9666 Lamp Flux:8190.72x1 lm | | |
| NAME: LED Street Light | TYPE:LED | WEIGHT:6.9Kg |
| SPEC.:C470SP-Q2-P-03A 230V50HZ | DIM.: 576*300*107mm | SERIAL No.:1 |
| MFR.: AOK | SUR.:160mm*230mm | PROTECTION ANGLE: |

| REFLECTANCE | | | | | | | | | | |
|----------------------------------|--|-----|-----------|-----|-----|-----|---------------|-----|-----|--------|
| Ceiling | 0.8 | 0.8 | 0.8 | 0.7 | 0.7 | 0.7 | 0.5 | 0.5 | 0.5 | 0 |
| Walls | 0.7 | 0.5 | 0.3 | 0.7 | 0.5 | 0.3 | 0.7 | 0.5 | 0.3 | 0 |
| Working plane | 0.2 | 0.2 | 0.2 | 0.2 | 0.2 | 0.2 | 0.2 | 0.2 | 0.2 | 0 |
| ROOM INDEX | UTILIZATION FACTORS (PERCENT) $k(RI) \times RCR = 5$ | | | | | | | | | |
| k = 0.60 | 56 | 44 | 37 | 55 | 44 | 37 | 54 | 43 | 36 | 30 |
| 0.80 | 66 | 54 | 46 | 65 | 54 | 46 | 63 | 53 | 46 | 39 |
| 1.00 | 75 | 63 | 56 | 73 | 63 | 55 | 71 | 64 | 55 | 48 |
| 1.25 | 82 | 71 | 64 | 81 | 71 | 64 | 78 | 69 | 63 | 55 |
| 1.50 | 87 | 77 | 70 | 86 | 76 | 70 | 83 | 74 | 68 | 61 |
| 2.00 | 95 | 86 | 79 | 93 | 85 | 79 | 89 | 82 | 77 | 69 |
| 2.50 | 99 | 91 | 85 | 97 | 90 | 84 | 93 | 87 | 82 | 74 |
| 3.00 | 102 | 96 | 90 | 100 | 94 | 89 | 96 | 91 | 87 | 78 |
| 4.00 | 107 | 101 | 96 | 104 | 99 | 95 | 100 | 96 | 92 | 83 |
| 5.00 | 109 | 104 | 100 | 107 | 102 | 99 | 102 | 99 | 96 | 87 |
| ROOM INDEX | UF(total) | | | | | | | | | Direct |
| According to DIN EN 13032-2 2004 | | | Suspended | | | | SHRNOM = 1.25 | | | |

C Range: 0 - 360DEG
 C Interval: 15.0DEG
 Test Speed: HIGH
 Temperature:25.3DEG
 Operators:ZZJ
 Test Date:2014-12-18

γ Range: 0 - 180DEG
 γ Interval: 1.0DEG
 γ Test System:EVERFINE GO-2000B_V1 SYSTEM V2.0.291
 Humidity:65.0%
 Test Distance:7.610m [K=1.0775]
 Remarks:

ISOCANDELA DIAGRAM

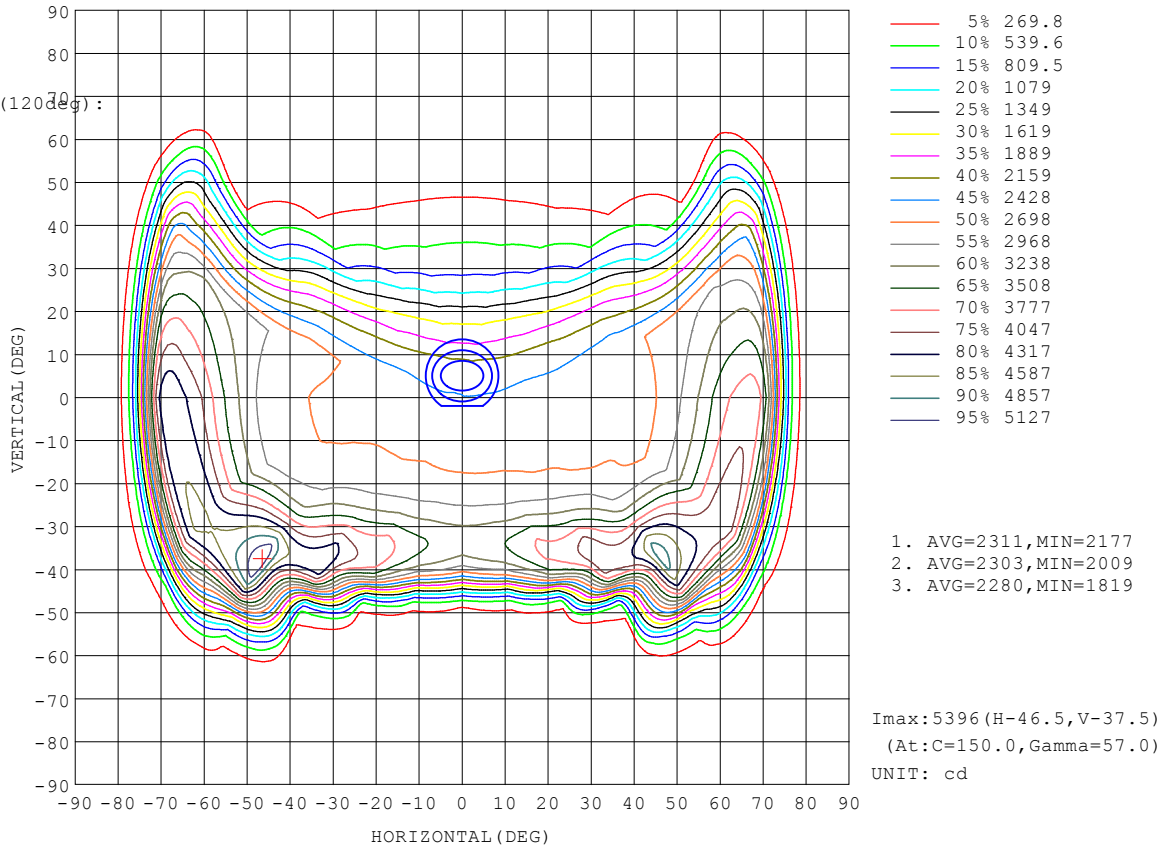
| | | |
|---|---------------------|-------------------|
| Test:U:219.7V I:0.3787A P:80.42W PF:0.9666 Lamp Flux:8190.72x1 lm | | |
| NAME: LED Street Light | TYPE:LED | WEIGHT:6.9Kg |
| SPEC.:C470SP-Q2-P-03A 230V50HZ | DIM.: 576*300*107mm | SERIAL No.:1 |
| MFR.: AOK | SUR.:160mm*230mm | PROTECTION ANGLE: |

Conical surface Flux(90deg):

4208.6 lm
%lum = 51.4%
%lamp = 51.4%

Conical surface Flux(120deg):

6394.2 lm
%lum = 78.1%
%lamp = 78.1%



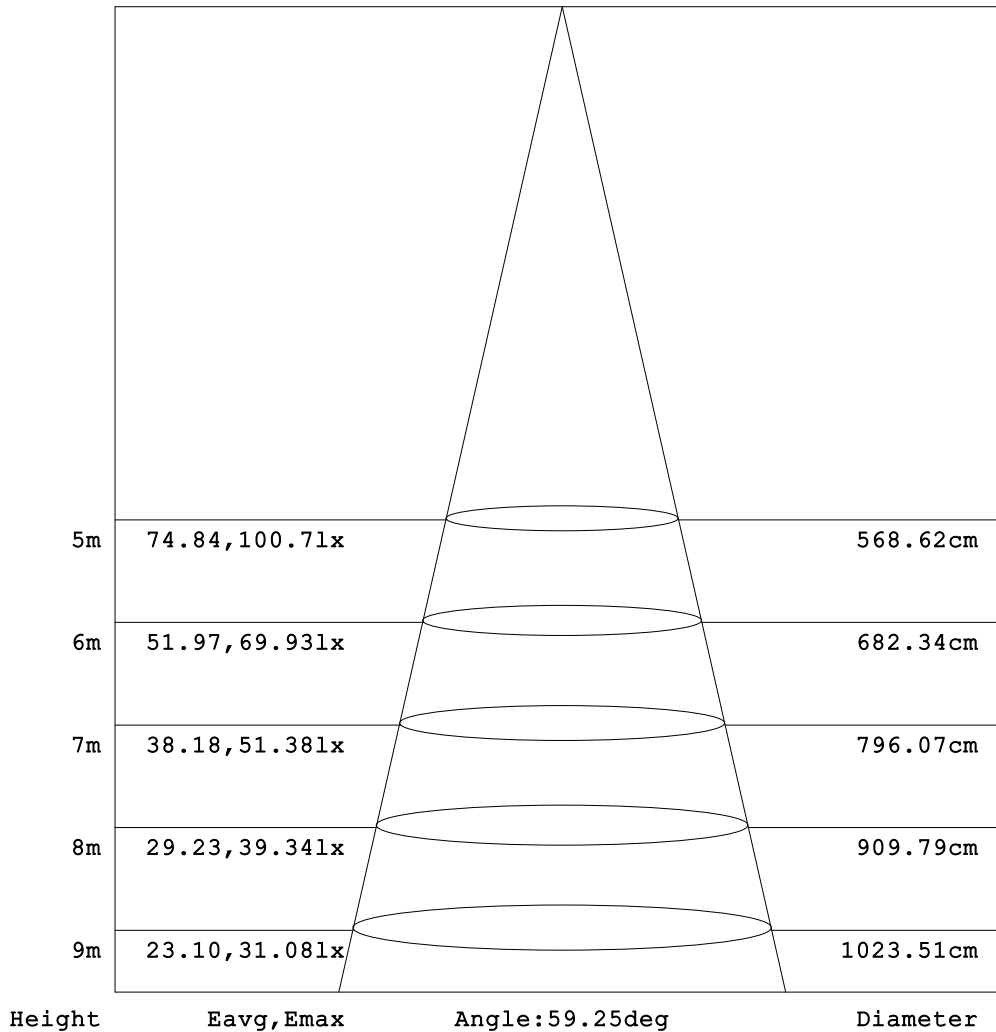
C Range: 0 - 360DEG
C Interval: 15.0DEG
Test Speed: HIGH
Temperature:25.3DEG
Operators:ZZJ
Test Date:2014-12-18

γ Range: 0 - 180DEG
γ Interval: 1.0DEG
Test System:EVERFINE GO-2000B_V1 SYSTEM V2.0.291
Humidity:65.0%
Test Distance:7.610m [K=1.0775]
Remarks:

AAI Figure

| | | |
|---|---------------------|-------------------|
| Test:U:219.7V I:0.3787A P:80.42W PF:0.9666 Lamp Flux:8190.72x1 lm | | |
| NAME: LED Street Light | TYPE:LED | WEIGHT:6.9Kg |
| SPEC.:C470SP-Q2-P-03A 230V50HZ | DIM.: 576*300*107mm | SERIAL No.:1 |
| MFR.: AOK | SUR.:160mm*230mm | PROTECTION ANGLE: |

Flux out:1959 lm



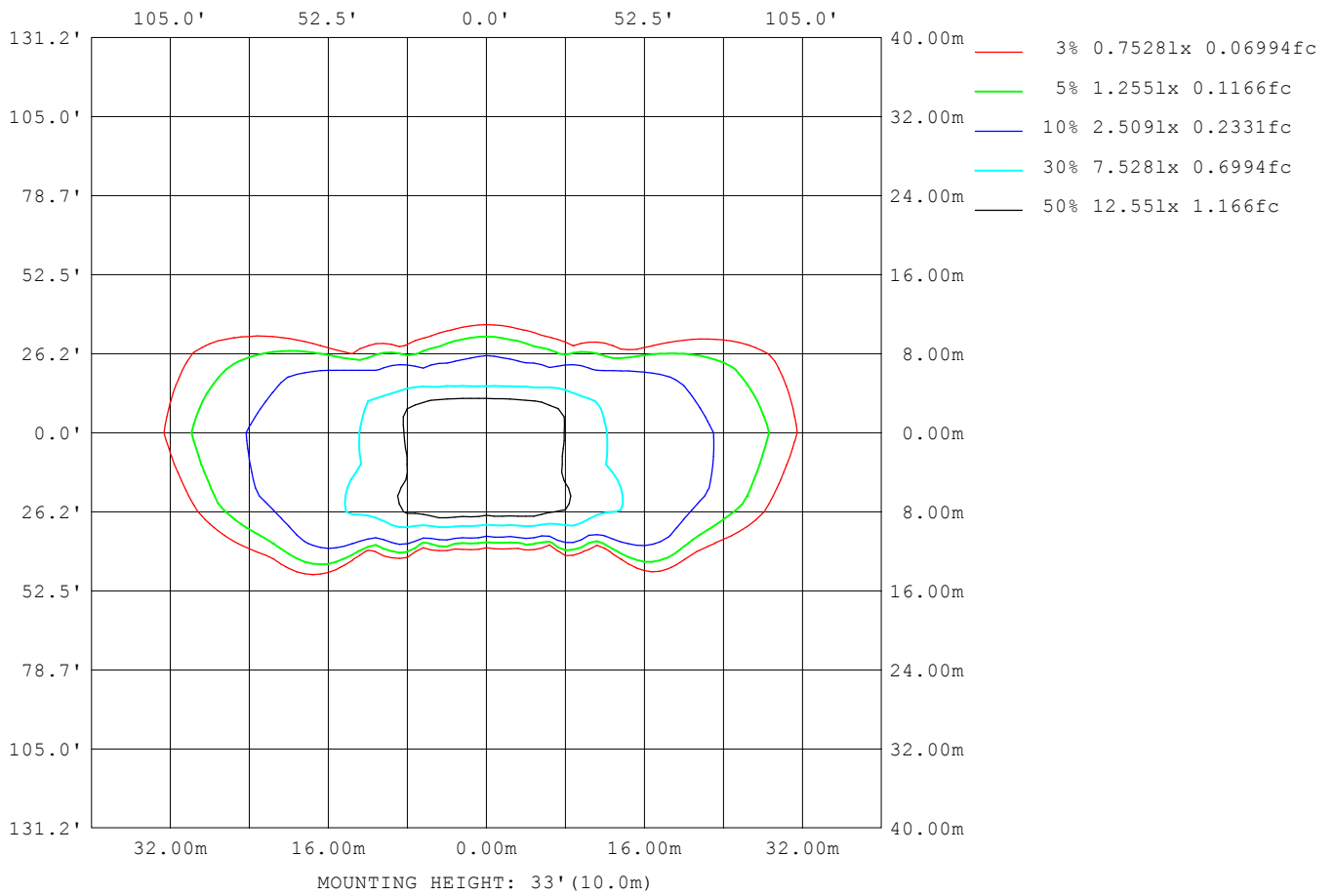
Note: The Curves indicate the illuminated area and the average illumination when the luminaire is at different distance.

C Range: 0 - 360DEG
 C Interval: 15.0DEG
 Test Speed: HIGH
 Temperature: 25.3DEG
 Operators: ZZJ
 Test Date: 2014-12-18

γ Range: 0 - 180DEG
 γ Interval: 1.0DEG
 Test System: EVERFINE GO-2000B_V1 SYSTEM V2.0.291
 Humidity: 65.0%
 Test Distance: 7.610m [K=1.0775]
 Remarks:

ISOLUX DIAGRAM

| | | |
|---|---------------------|-------------------|
| Test:U:219.7V I:0.3787A P:80.42W PF:0.9666 Lamp Flux:8190.72x1 lm | | |
| NAME: LED Street Light | TYPE:LED | WEIGHT:6.9Kg |
| SPEC.:C470SP-Q2-P-03A 230V50HZ | DIM.: 576*300*107mm | SERIAL No.:1 |
| MFR.: AOK | SUR.:160mm*230mm | PROTECTION ANGLE: |



C Range: 0 - 360DEG
 C Interval: 15.0DEG
 Test Speed: HIGH
 Temperature:25.3DEG
 Operators:ZZJ
 Test Date:2014-12-18

γ Range: 0 - 180DEG
 γ Interval: 1.0DEG
 Test System:EVERFINE GO-2000B_V1 SYSTEM V2.0.291
 Humidity:65.0%
 Test Distance:7.610m [K=1.0775]
 Remarks:

LED Avg.L Report

| | | |
|---|---------------------|-------------------|
| Test:U:219.7V I:0.3787A P:80.42W PF:0.9666 Lamp Flux:8190.72x1 lm | | |
| NAME: LED Street Light | TYPE:LED | WEIGHT:6.9Kg |
| SPEC.:C470SP-Q2-P-03A 230V50HZ | DIM.: 576*300*107mm | SERIAL No.:1 |
| MFR.: AOK | SUR.:160mm*230mm | PROTECTION ANGLE: |

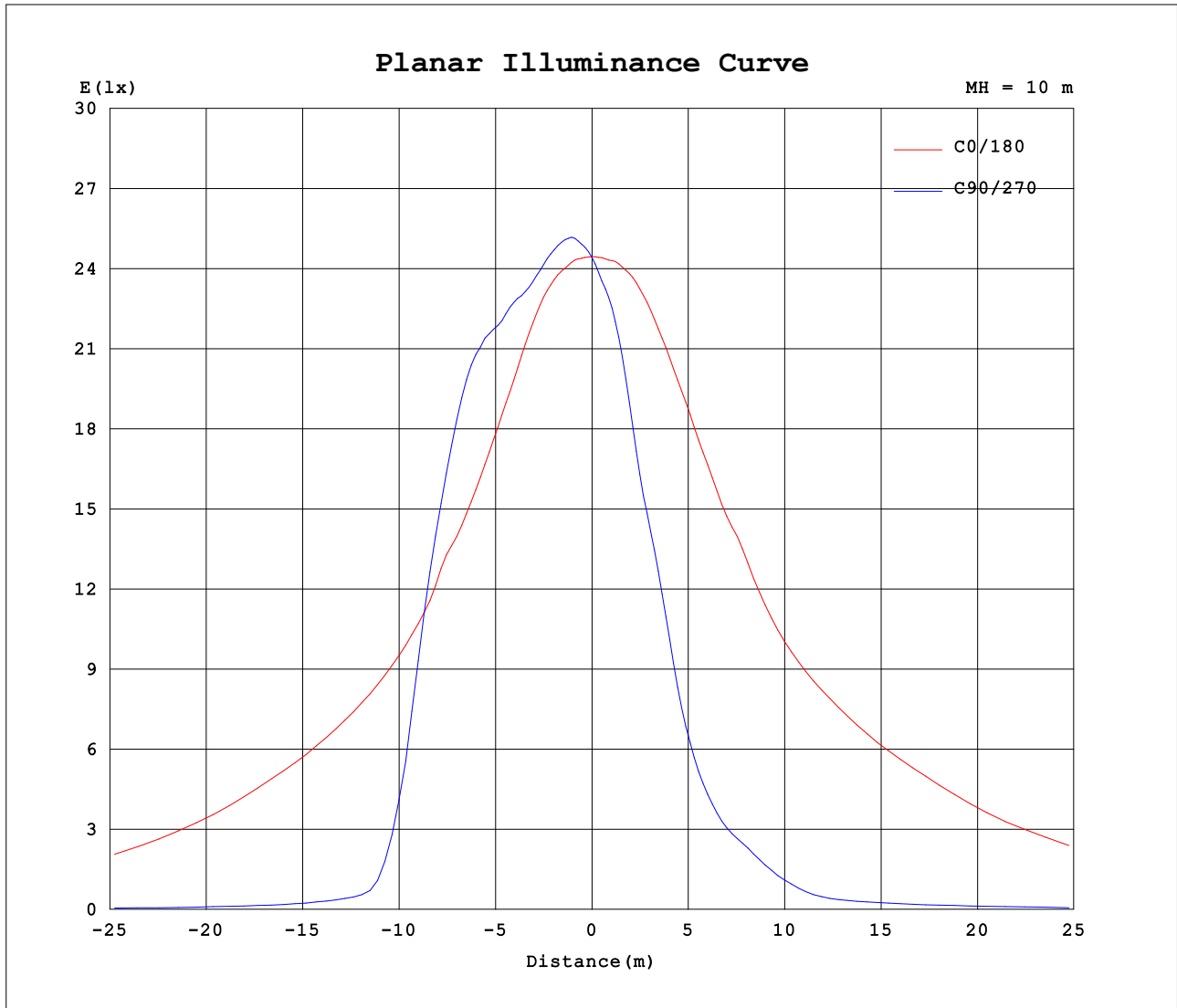
| AvgL | cd/m2 |
|------------------|-------|
| L_0~180 (65) av | 97959 |
| L_0~180 (75) av | 55062 |
| L_0~180 (85) av | 2927 |
| L_90~270 (65) av | 3126 |
| L_90~270 (75) av | 4038 |
| L_90~270 (85) av | 4643 |
| L_45 (65) av | 3292 |
| L_45 (75) av | 3480 |
| L_45 (85) av | 3470 |

Standard: GB/T 29293-2012

C Range: 0 - 360DEG
 C Interval: 15.0DEG
 Test Speed: HIGH
 Temperature:25.3DEG
 Operators:ZZJ
 Test Date:2014-12-18

γ Range: 0 - 180DEG
 γ Interval: 1.0DEG
 Test System:EVERFINE GO-2000B_V1 SYSTEM V2.0.291
 Humidity:65.0%
 Test Distance:7.610m [K=1.0775]
 Remarks:

Planar Illuminance Curve



C Range: 0 - 360DEG
 C Interval: 15.0DEG
 Test Speed: HIGH
 Temperature: 25.3DEG
 Operators: ZZJ
 Test Date: 2014-12-18

γ Range: 0 - 180DEG
 γ Interval: 1.0DEG
 Test System: EVERFINE GO-2000B_V1 SYSTEM V2.0.291
 Humidity: 65.0%
 Test Distance: 7.610m [K=1.0775]
 Remarks:

LUMINOUS DISTRIBUTION INTENSITY DATA

| | | |
|---|---------------------|-------------------|
| Test:U:219.7V I:0.3787A P:80.42W PF:0.9666 Lamp Flux:8190.72x1 lm | | |
| NAME: LED Street Light | TYPE:LED | WEIGHT:6.9Kg |
| SPEC.:C470SP-Q2-P-03A 230V50HZ | DIM.: 576*300*107mm | SERIAL No.:1 |
| MFR.: AOK | SUR.:160mm*230mm | PROTECTION ANGLE: |

Table--1

UNIT: cd

| C (DEG) \ γ (DEG) | 0 | 15 | 30 | 45 | 60 | 75 | 90 | 105 | 120 | 135 | 150 | 165 | 180 | 195 | 210 | 225 | 240 | 255 | 270 |
|-------------------|------|------|------|------|------|------|------|------|------|------|------|------|------|------|------|------|------|------|------|
| 0 | 2446 | 2445 | 2453 | 2442 | 2451 | 2436 | 2442 | 2427 | 2434 | 2422 | 2431 | 2422 | 2446 | 2445 | 2453 | 2442 | 2451 | 2436 | 2442 |
| 5 | 2460 | 2484 | 2511 | 2515 | 2537 | 2531 | 2542 | 2527 | 2526 | 2503 | 2498 | 2466 | 2461 | 2431 | 2404 | 2365 | 2351 | 2320 | 2320 |
| 10 | 2488 | 2528 | 2565 | 2574 | 2602 | 2590 | 2603 | 2592 | 2605 | 2586 | 2578 | 2534 | 2507 | 2448 | 2399 | 2303 | 2212 | 2107 | 2081 |
| 15 | 2513 | 2560 | 2597 | 2617 | 2644 | 2646 | 2656 | 2657 | 2672 | 2653 | 2634 | 2596 | 2552 | 2487 | 2391 | 2157 | 1928 | 1754 | 1720 |
| 20 | 2498 | 2555 | 2615 | 2656 | 2706 | 2743 | 2771 | 2766 | 2751 | 2700 | 2679 | 2624 | 2580 | 2529 | 2346 | 1946 | 1668 | 1476 | 1426 |
| 25 | 2488 | 2550 | 2634 | 2722 | 2847 | 2938 | 2962 | 2969 | 2900 | 2781 | 2729 | 2653 | 2609 | 2601 | 2276 | 1749 | 1360 | 1083 | 1016 |
| 30 | 2494 | 2558 | 2675 | 2878 | 3164 | 3247 | 3244 | 3284 | 3212 | 2961 | 2782 | 2665 | 2636 | 2714 | 2187 | 1492 | 973 | 758 | 728 |
| 35 | 2543 | 2595 | 2770 | 3220 | 3644 | 3480 | 3339 | 3523 | 3692 | 3307 | 2875 | 2709 | 2681 | 2830 | 2103 | 1144 | 672 | 563 | 558 |
| 40 | 2575 | 2600 | 2905 | 3813 | 3830 | 3148 | 2816 | 3238 | 3945 | 3908 | 3016 | 2760 | 2760 | 2895 | 1945 | 759 | 490 | 450 | 464 |
| 45 | 2691 | 2722 | 3281 | 4271 | 3339 | 1569 | 1163 | 1720 | 3534 | 4448 | 3386 | 2859 | 2841 | 2931 | 1648 | 495 | 346 | 319 | 315 |
| 50 | 2918 | 2991 | 4233 | 4157 | 961 | 302 | 212 | 329 | 1181 | 4480 | 4380 | 3139 | 3098 | 3027 | 1201 | 311 | 214 | 182 | 182 |
| 55 | 3248 | 3409 | 5018 | 1972 | 207 | 163 | 153 | 164 | 218 | 2399 | 5295 | 3604 | 3487 | 3125 | 717 | 184 | 151 | 151 | 153 |
| 60 | 3646 | 3945 | 4801 | 289 | 143 | 129 | 123 | 128 | 144 | 378 | 5256 | 4231 | 3995 | 3207 | 357 | 135 | 136 | 146 | 148 |
| 65 | 3902 | 4304 | 3152 | 150 | 118 | 118 | 115 | 117 | 116 | 169 | 3563 | 4705 | 4378 | 3208 | 182 | 118 | 129 | 143 | 149 |
| 70 | 3699 | 2881 | 532 | 106 | 105 | 113 | 105 | 111 | 102 | 105 | 814 | 3568 | 4426 | 2871 | 106 | 105 | 118 | 132 | 140 |
| 75 | 1239 | 452 | 126 | 90.4 | 90.5 | 96.7 | 87.9 | 94.8 | 87.7 | 89.0 | 141 | 517 | 1611 | 1581 | 84.9 | 90.5 | 104 | 117 | 121 |
| 80 | 151 | 99.7 | 71.8 | 69.6 | 67.9 | 71.8 | 56.1 | 70.2 | 66.3 | 67.3 | 72.8 | 96.0 | 173 | 175 | 64.3 | 71.8 | 84.8 | 94.8 | 92.4 |
| 85 | 25.3 | 41.2 | 46.2 | 31.4 | 29.7 | 40.3 | 33.4 | 38.2 | 30.8 | 30.3 | 46.9 | 39.6 | 25.7 | 57.3 | 33.6 | 29.7 | 31.4 | 47.9 | 47.5 |
| 90 | 1.22 | 0.85 | 0.26 | 0.33 | 0.90 | 5.20 | 1.33 | 4.91 | 1.13 | 0.55 | 0.41 | 0.87 | 0.54 | 0.36 | 0.30 | 0.50 | 1.21 | 5.30 | 1.95 |
| 95 | 2.56 | 1.67 | 0.35 | 0.20 | 0.34 | 0.51 | 0.63 | 0.62 | 0.45 | 0.38 | 0.55 | 1.65 | 1.50 | 1.01 | 0.50 | 0.32 | 0.47 | 0.62 | 0.99 |
| 100 | 4.26 | 2.76 | 0.71 | 0.24 | 0.33 | 0.48 | 0.87 | 0.50 | 0.39 | 0.35 | 1.00 | 2.77 | 2.90 | 2.40 | 1.33 | 0.37 | 0.37 | 0.39 | 0.52 |
| 105 | 5.89 | 3.78 | 1.22 | 0.28 | 0.38 | 0.47 | 1.15 | 0.50 | 0.40 | 0.38 | 1.65 | 3.90 | 4.37 | 4.17 | 2.76 | 0.81 | 0.36 | 0.37 | 0.74 |
| 110 | 6.99 | 4.66 | 1.83 | 0.37 | 0.37 | 0.45 | 2.95 | 0.45 | 0.40 | 0.50 | 2.41 | 4.81 | 5.53 | 5.73 | 4.36 | 1.93 | 0.41 | 0.42 | 5.34 |
| 115 | 7.89 | 5.50 | 2.45 | 0.54 | 0.41 | 0.49 | 6.42 | 0.50 | 0.43 | 0.73 | 3.06 | 5.53 | 6.52 | 6.95 | 5.68 | 3.51 | 0.91 | 0.56 | 10.3 |
| 120 | 8.20 | 6.03 | 2.97 | 0.85 | 0.50 | 0.63 | 7.84 | 0.63 | 0.57 | 1.13 | 3.49 | 5.67 | 7.03 | 7.68 | 6.41 | 5.10 | 2.12 | 1.13 | 11.7 |
| 125 | 8.01 | 6.10 | 3.45 | 1.31 | 0.70 | 0.80 | 7.05 | 0.78 | 0.79 | 1.64 | 3.77 | 5.56 | 7.17 | 8.00 | 6.60 | 6.06 | 3.70 | 2.24 | 11.1 |
| 130 | 7.45 | 5.93 | 3.86 | 1.83 | 1.00 | 0.97 | 3.76 | 0.94 | 1.16 | 2.22 | 3.96 | 5.43 | 7.03 | 8.08 | 6.79 | 6.27 | 5.12 | 3.70 | 6.46 |
| 135 | 6.96 | 5.76 | 4.21 | 2.42 | 1.43 | 1.32 | 3.78 | 1.40 | 1.76 | 2.75 | 4.09 | 5.35 | 6.71 | 7.77 | 7.27 | 6.21 | 6.11 | 5.18 | 7.22 |
| 140 | 6.62 | 5.67 | 4.48 | 3.00 | 2.01 | 1.83 | 4.58 | 1.97 | 2.27 | 3.22 | 4.21 | 5.37 | 6.40 | 7.25 | 7.60 | 6.45 | 6.26 | 6.48 | 9.57 |
| 145 | 6.39 | 5.63 | 4.70 | 3.53 | 2.62 | 2.37 | 4.06 | 2.54 | 2.84 | 3.59 | 4.39 | 5.42 | 6.17 | 6.78 | 7.44 | 7.03 | 6.35 | 6.56 | 8.76 |
| 150 | 6.27 | 5.65 | 4.91 | 4.02 | 3.24 | 3.01 | 4.13 | 3.15 | 3.39 | 3.97 | 4.65 | 5.52 | 6.06 | 6.50 | 7.06 | 7.33 | 6.92 | 6.92 | 7.98 |
| 155 | 6.22 | 5.72 | 5.14 | 4.46 | 3.88 | 3.70 | 4.00 | 3.68 | 3.95 | 4.38 | 4.97 | 5.64 | 6.03 | 6.36 | 6.74 | 7.16 | 7.25 | 7.30 | 7.51 |
| 160 | 6.15 | 5.80 | 5.34 | 4.88 | 4.50 | 4.43 | 4.49 | 4.36 | 4.51 | 4.87 | 5.30 | 5.76 | 6.03 | 6.31 | 6.54 | 6.89 | 7.13 | 7.39 | 7.46 |
| 165 | 6.16 | 5.91 | 5.60 | 5.30 | 5.10 | 5.06 | 5.05 | 5.02 | 5.14 | 5.40 | 5.66 | 5.93 | 6.05 | 6.29 | 6.47 | 6.70 | 6.92 | 7.13 | 7.21 |
| 170 | 6.23 | 6.05 | 5.88 | 5.73 | 5.66 | 5.63 | 5.61 | 5.61 | 5.76 | 5.92 | 6.04 | 6.13 | 6.13 | 6.30 | 6.45 | 6.58 | 6.76 | 6.91 | 6.94 |
| 175 | 6.30 | 6.20 | 6.14 | 6.10 | 6.11 | 6.12 | 6.10 | 6.12 | 6.19 | 6.25 | 6.30 | 6.32 | 6.23 | 6.36 | 6.44 | 6.51 | 6.61 | 6.71 | 6.75 |
| 180 | 6.29 | 6.31 | 6.36 | 6.38 | 6.41 | 6.45 | 6.47 | 6.47 | 6.50 | 6.52 | 6.49 | 6.40 | 6.29 | 6.31 | 6.36 | 6.38 | 6.40 | 6.45 | 6.47 |

C Range: 0 - 360DEG
 C Interval: 15.0DEG
 Test Speed: HIGH
 Temperature:25.3DEG
 Operators:ZZJ
 Test Date:2014-12-18

γ Range: 0 - 180DEG
 γ Interval: 1.0DEG
 Test System:EVERFINE GO-2000B_V1 SYSTEM V2.0.291
 Humidity:65.0%
 Test Distance:7.610m [K=1.0775]
 Remarks:

LUMINOUS DISTRIBUTION INTENSITY DATA

| | | |
|---|---------------------|-------------------|
| Test:U:219.7V I:0.3787A P:80.42W PF:0.9666 Lamp Flux:8190.72x1 lm | | |
| NAME: LED Street Light | TYPE:LED | WEIGHT:6.9Kg |
| SPEC.:C470SP-Q2-P-03A 230V50HZ | DIM.: 576*300*107mm | SERIAL No.:1 |
| MFR.: AOK | SUR.:160mm*230mm | PROTECTION ANGLE: |

Table--2

UNIT: cd

| C (DEG) γ (DEG) | 285 | 300 | 315 | 330 | 345 | | | | | | | | | | | | | | |
|--------------------|------|------|------|------|------|--|--|--|--|--|--|--|--|--|--|--|--|--|--|
| 0 | 2427 | 2434 | 2422 | 2431 | 2422 | | | | | | | | | | | | | | |
| 5 | 2307 | 2330 | 2338 | 2375 | 2401 | | | | | | | | | | | | | | |
| 10 | 2081 | 2164 | 2249 | 2348 | 2404 | | | | | | | | | | | | | | |
| 15 | 1743 | 1887 | 2087 | 2312 | 2428 | | | | | | | | | | | | | | |
| 20 | 1465 | 1648 | 1896 | 2254 | 2431 | | | | | | | | | | | | | | |
| 25 | 1084 | 1337 | 1707 | 2165 | 2459 | | | | | | | | | | | | | | |
| 30 | 767 | 971 | 1448 | 2096 | 2532 | | | | | | | | | | | | | | |
| 35 | 574 | 675 | 1109 | 2009 | 2624 | | | | | | | | | | | | | | |
| 40 | 447 | 498 | 763 | 1858 | 2659 | | | | | | | | | | | | | | |
| 45 | 317 | 353 | 518 | 1579 | 2707 | | | | | | | | | | | | | | |
| 50 | 186 | 221 | 337 | 1181 | 2778 | | | | | | | | | | | | | | |
| 55 | 151 | 151 | 203 | 771 | 2870 | | | | | | | | | | | | | | |
| 60 | 145 | 136 | 142 | 431 | 2946 | | | | | | | | | | | | | | |
| 65 | 142 | 128 | 120 | 217 | 2870 | | | | | | | | | | | | | | |
| 70 | 130 | 117 | 105 | 111 | 2566 | | | | | | | | | | | | | | |
| 75 | 115 | 102 | 90.3 | 84.5 | 1368 | | | | | | | | | | | | | | |
| 80 | 92.6 | 83.5 | 70.5 | 64.3 | 152 | | | | | | | | | | | | | | |
| 85 | 47.7 | 30.9 | 29.5 | 32.9 | 52.4 | | | | | | | | | | | | | | |
| 90 | 5.03 | 1.12 | 0.37 | 0.16 | 0.31 | | | | | | | | | | | | | | |
| 95 | 0.60 | 0.41 | 0.22 | 0.47 | 1.13 | | | | | | | | | | | | | | |
| 100 | 0.38 | 0.34 | 0.32 | 1.41 | 2.68 | | | | | | | | | | | | | | |
| 105 | 0.36 | 0.33 | 0.76 | 2.88 | 4.52 | | | | | | | | | | | | | | |
| 110 | 0.41 | 0.39 | 1.81 | 4.45 | 6.01 | | | | | | | | | | | | | | |
| 115 | 0.54 | 0.88 | 3.29 | 5.70 | 7.32 | | | | | | | | | | | | | | |
| 120 | 1.09 | 2.02 | 4.77 | 6.65 | 8.40 | | | | | | | | | | | | | | |
| 125 | 2.20 | 3.50 | 5.86 | 7.47 | 8.79 | | | | | | | | | | | | | | |
| 130 | 3.58 | 4.82 | 6.61 | 8.03 | 8.58 | | | | | | | | | | | | | | |
| 135 | 4.96 | 5.86 | 7.22 | 8.13 | 8.11 | | | | | | | | | | | | | | |
| 140 | 6.27 | 6.71 | 7.45 | 7.89 | 7.60 | | | | | | | | | | | | | | |
| 145 | 7.04 | 7.11 | 7.46 | 7.56 | 7.17 | | | | | | | | | | | | | | |
| 150 | 7.30 | 7.27 | 7.43 | 7.24 | 6.87 | | | | | | | | | | | | | | |
| 155 | 7.34 | 7.36 | 7.27 | 6.97 | 6.69 | | | | | | | | | | | | | | |
| 160 | 7.29 | 7.23 | 7.06 | 6.77 | 6.55 | | | | | | | | | | | | | | |
| 165 | 7.13 | 7.07 | 6.93 | 6.70 | 6.51 | | | | | | | | | | | | | | |
| 170 | 6.95 | 6.94 | 6.87 | 6.69 | 6.51 | | | | | | | | | | | | | | |
| 175 | 6.77 | 6.78 | 6.79 | 6.68 | 6.51 | | | | | | | | | | | | | | |
| 180 | 6.48 | 6.50 | 6.53 | 6.48 | 6.42 | | | | | | | | | | | | | | |

C Range: 0 - 360DEG
 C Interval: 15.0DEG
 Test Speed: HIGH
 Temperature:25.3DEG
 Operators:ZZJ
 Test Date:2014-12-18

γ Range: 0 - 180DEG
 γ Interval: 1.0DEG
 Test System:EVERFINE GO-2000B_V1 SYSTEM V2.0.291
 Humidity:65.0%
 Test Distance:7.610m [K=1.0775]
 Remarks: