



Light Output Ratio:	100.0%	
Luminaire Power:	41.05 W	
SHR Nominal:	0.75	Calculated using the TM5
SHR Maximum:	0.80	fine grid method.

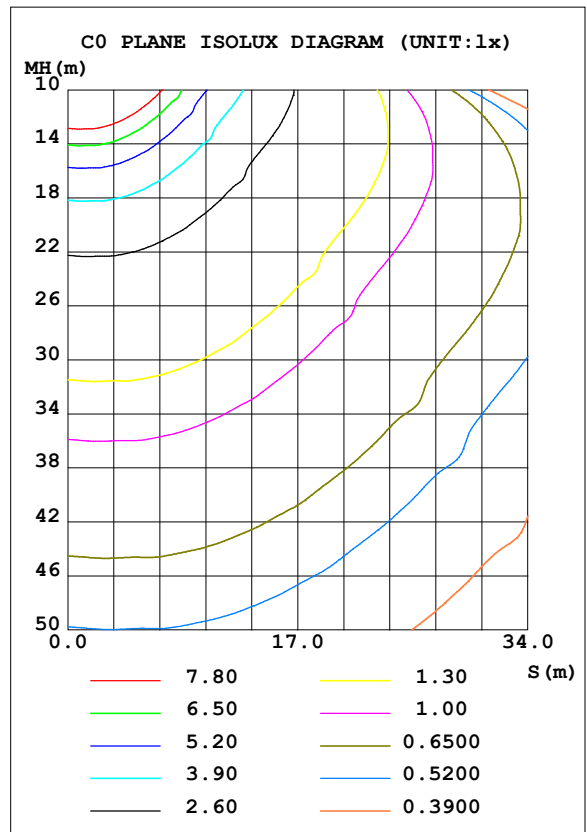
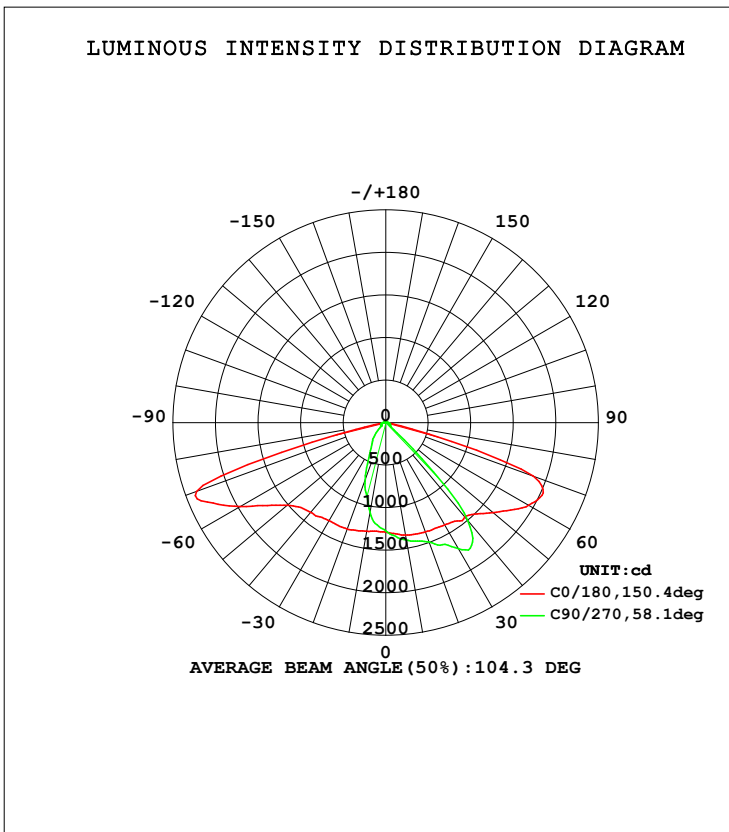
C Range: 0 - 360DEG
 C Interval: 15.0DEG
 Test Speed: HIGH
 Temperature: 25.3DEG
 Operators: ZZJ
 Test Date: 2014-12-17

γ Range: 0 - 180DEG
 γ Interval: 1.0DEG
 Test System: EVERFINE GO-2000B_V1 SYSTEM V2.0.291
 Humidity: 65.0%
 Test Distance: 7.610m [K=1.0775]
 Remarks:

LUMINAIRE PHOTOMETRIC TEST REPORT

Test:U:219.7V I:0.1906A P:41.05W PF:0.9804 Lamp Flux:4242.75x1 lm		
NAME: LED Street Light	TYPE:LED	WEIGHT:5.55Kg
SPEC.:C470SP-Q2-P-03A 230V50HZ	DIM.: 495*300*107mm	SERIAL No.:1
MFR.: AOK	SUR.:79mm*230mm	PROTECTION ANGLE:

DATA OF LAMP		PHOTOMETRIC DATA Eff: 103.36 lm/W			
MODEL	AOK-40WiL	I _{max} (cd)	2736	S/MH (C0/180)	1.63
NOMINAL POWER (W)	40	LOR (%)	100.0	S/MH (C90/270)	0.69
RATED VOLTAGE (V)	220	TOTAL FLUX (lm)	4242.7	η UP, DN (C0-180)	0.4, 64.1
NOMINAL FLUX (lm)	4242.75	CIE CLASS	DIRECT	η UP, DN (C180-360)	0.6, 34.9
LAMPS INSIDE	1	η up (%)	1.0	CIBSE SHR NOM	0.75
TEST VOLTAGE (V)	220	η down (%)	99.0	CIBSE SHR MAX	0.80



C Range: 0 - 360DEG
 C Interval: 15.0DEG
 Test Speed: HIGH
 Temperature: 25.3DEG
 Operators: ZZJ
 Test Date: 2014-12-17

γ Range: 0 - 180DEG
 γ Interval: 1.0DEG
 Test System: EVERFINE GO-2000B_V1 SYSTEM V2.0.291
 Humidity: 65.0%
 Test Distance: 7.610m [K=1.0775]
 Remarks:

ZONAL FLUX DIAGRAM

ZONAL FLUX DIAGRAM:

γ	C0	C45	C90	C135	C180	C225	C270	C315	γ	Φ zone	Φ total	%lum, lamp
10	1342	1403	1400	1366	1297	1182	1072	1203	0- 10	122.6	122.6	2.89,2.89
20	1364	1460	1495	1425	1330	928.7	714.3	1026	10- 20	354.7	477.3	11.2,11.2
30	1389	1574	1714	1531	1331	656.3	353.3	810.9	20- 30	554.0	1031	24.3,24.3
40	1447	1975	1503	2024	1376	287.3	221.5	448.8	30- 40	747.7	1779	41.9,41.9
50	1644	2347	86.95	2185	1509	114.6	78.65	196.5	40- 50	814.4	2593	61.1,61.1
60	1940	205.5	52.39	113.1	1971	56.74	67.86	67.78	50- 60	722.8	3316	78.2,78.2
70	1845	49.27	47.56	42.02	2367	45.98	65.39	49.61	60- 70	640.0	3956	93.2,93.2
80	48.10	35.51	28.69	29.52	75.69	32.84	50.15	32.75	70- 80	216.0	4172	98.3,98.3
90	0.5678	12.84	22.59	12.00	0.1602	15.80	36.26	13.78	80- 90	27.77	4200	99,99
100	1.911	9.296	14.72	6.784	1.463	9.533	17.97	7.976	90-100	11.51	4211	99.3,99.3
110	3.434	7.062	9.350	7.246	3.220	11.91	20.68	9.585	100-110	9.609	4221	99.5,99.5
120	4.074	5.205	7.268	5.692	4.215	9.139	11.51	7.434	110-120	7.558	4229	99.7,99.7
130	3.737	3.738	5.138	4.013	4.179	7.533	9.157	6.956	120-130	5.394	4234	99.8,99.8
140	3.427	2.067	3.208	2.403	3.812	5.105	7.642	5.212	130-140	3.691	4238	99.9,99.9
150	3.316	2.050	1.984	2.342	3.586	4.530	5.045	4.255	140-150	2.311	4240	99.9,99.9
160	3.303	2.511	2.346	2.710	3.462	3.949	4.329	3.843	150-160	1.541	4241	100,100
170	3.373	3.024	2.988	3.241	3.440	3.684	3.869	3.701	160-170	0.9502	4242	100,100
180	3.458	3.498	3.568	3.551	3.467	3.493	3.568	3.551	170-180	0.3308	4243	100,100
DEG	LUMINOUS INTENSITY:cd									UNIT:lm		

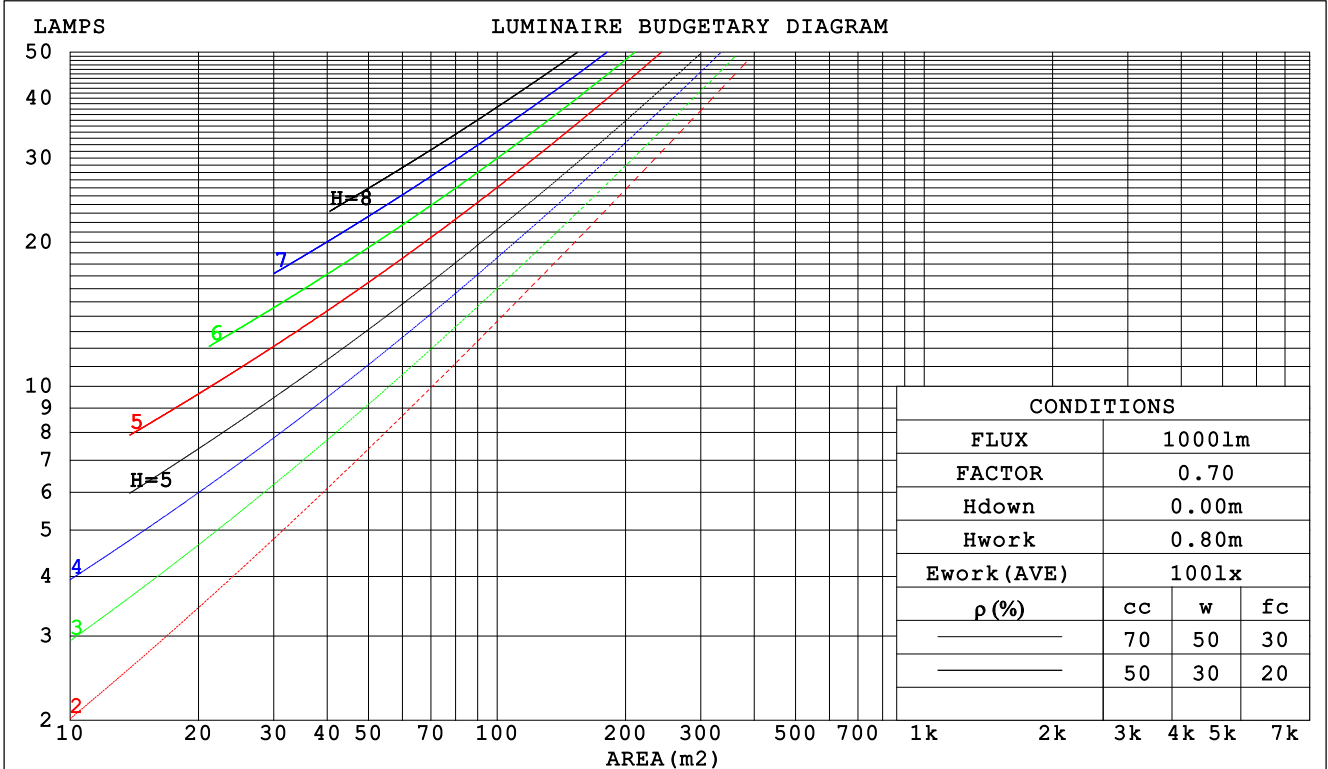
C Range: 0 - 360DEG
 C Interval: 15.0DEG
 Test Speed: HIGH
 Temperature:25.3DEG
 Operators:ZZJ
 Test Date:2014-12-17

γ Range: 0 - 180DEG
 γ Interval: 1.0DEG
 Test System:EVERFINE GO-2000B_V1 SYSTEM V2.0.291
 Humidity:65.0%
 Test Distance:7.610m [K=1.0775]
 Remarks:

CU AND LUMINAIRE BUDGETARY ESTIMATE DIAGRAM

Test:U:219.7V I:0.1906A P:41.05W PF:0.9804 Lamp Flux:4242.75x1 lm		
NAME: LED Street Light	TYPE:LED	WEIGHT:5.55Kg
SPEC.:C470SP-Q2-P-03A 230V50HZ	DIM.: 495*300*107mm	SERIAL No.:1
MFR.: AOK	SUR.:79mm*230mm	PROTECTION ANGLE:

ρ_{cc}	80%			70%			50%			30%			10%			0
ρ_w	50%	30%	10%	50%	30%	10%	50%	30%	10%	50%	30%	10%	50%	30%	10%	0
ρ_{fc}	20%			20%			20%			20%			20%			0
RCR	RCR:Room Cavity Ratio						Coefficients of Utilization(CU)									
0.0	1.19	1.19	1.19	1.16	1.16	1.16	1.11	1.11	1.11	1.06	1.06	1.06	1.01	1.01	1.01	.99
1.0	1.04	1.00	.96	1.02	.98	.95	.97	.94	.92	.93	.91	.89	.90	.88	.86	.84
2.0	.91	.84	.78	.89	.82	.77	.85	.80	.75	.82	.77	.73	.78	.75	.72	.69
3.0	.79	.71	.64	.78	.70	.64	.74	.68	.63	.72	.66	.61	.69	.64	.60	.58
4.0	.70	.61	.54	.68	.60	.54	.66	.58	.53	.63	.57	.52	.61	.56	.51	.49
5.0	.62	.53	.46	.61	.52	.46	.59	.51	.45	.56	.50	.45	.54	.49	.44	.42
6.0	.56	.46	.40	.54	.46	.40	.53	.45	.39	.51	.44	.39	.49	.43	.38	.36
7.0	.50	.41	.35	.49	.41	.35	.48	.40	.34	.46	.39	.34	.45	.38	.34	.32
8.0	.46	.37	.31	.45	.37	.31	.43	.36	.31	.42	.35	.30	.41	.35	.30	.28
9.0	.42	.33	.28	.41	.33	.28	.40	.32	.27	.39	.32	.27	.37	.31	.27	.25
10.0	.38	.30	.25	.38	.30	.25	.37	.30	.25	.36	.29	.24	.35	.29	.24	.23



C Range: 0 - 360DEG
 C Interval: 15.0DEG
 Test Speed: HIGH
 Temperature:25.3DEG
 Operators:ZZJ
 Test Date:2014-12-17

γ Range: 0 - 180DEG
 γ Interval: 1.0DEG
 Test System:EVERFINE GO-2000B_V1 SYSTEM V2.0.291
 Humidity:65.0%
 Test Distance:7.610m [K=1.0775]
 Remarks:

WEC AND CCEC

Test:U:219.7V I:0.1906A P:41.05W PF:0.9804 Lamp Flux:4242.75x1 lm		
NAME: LED Street Light	TYPE:LED	WEIGHT:5.55Kg
SPEC.:C470SP-Q2-P-03A 230V50HZ	DIM.: 495*300*107mm	SERIAL No.:1
MFR.: AOK	SUR.:79mm*230mm	PROTECTION ANGLE:

ρcc	80%			70%			50%			30%			10%			0
ρw	50%	30%	10%	50%	30%	10%	50%	30%	10%	50%	30%	10%	50%	30%	10%	0
ρfc	20%			20%			20%			20%			20%			0
RCR	RCR:Room Cavity Ratio						Wall Exitance Coefficients (WEC)									
0.0																
1.0	.297	.169	.054	.290	.165	.053	.276	.159	.051	.264	.152	.049	.252	.146	.047	
2.0	.287	.158	.048	.281	.155	.048	.269	.149	.046	.258	.144	.045	.247	.140	.044	
3.0	.269	.143	.043	.264	.141	.043	.253	.137	.042	.243	.133	.041	.234	.129	.040	
4.0	.250	.130	.038	.245	.128	.038	.236	.125	.037	.227	.122	.037	.218	.119	.036	
5.0	.232	.118	.034	.228	.117	.034	.219	.114	.034	.211	.111	.033	.204	.109	.033	
6.0	.216	.108	.031	.212	.107	.031	.204	.105	.030	.197	.102	.030	.190	.100	.030	
7.0	.201	.099	.028	.197	.098	.028	.191	.096	.028	.184	.094	.027	.178	.093	.027	
8.0	.188	.092	.026	.185	.091	.026	.178	.089	.025	.173	.087	.025	.167	.086	.025	
9.0	.176	.085	.024	.173	.084	.024	.168	.083	.023	.162	.081	.023	.157	.080	.023	
10.0	.166	.079	.022	.163	.079	.022	.158	.077	.022	.153	.076	.022	.149	.075	.021	

ρcc	80%			70%			50%			30%			10%			0
ρw	50%	30%	10%	50%	30%	10%	50%	30%	10%	50%	30%	10%	50%	30%	10%	0
ρfc	20%			20%			20%			20%			20%			0
RCR	RCR:Room Cavity Ratio						Ceiling Cavity Exitance Coefficients (CCEC)									
0.0	.198	.198	.198	.169	.169	.169	.116	.116	.116	.066	.066	.066	.021	.021	.021	
1.0	.187	.164	.143	.160	.141	.123	.110	.097	.085	.063	.056	.050	.020	.018	.016	
2.0	.179	.140	.106	.154	.120	.092	.105	.083	.064	.061	.048	.038	.019	.016	.012	
3.0	.172	.122	.082	.148	.105	.071	.101	.073	.050	.059	.043	.029	.019	.014	.010	
4.0	.165	.109	.066	.142	.094	.057	.097	.066	.040	.056	.038	.024	.018	.013	.008	
5.0	.158	.099	.055	.136	.085	.048	.093	.060	.034	.054	.035	.020	.017	.011	.007	
6.0	.151	.090	.047	.130	.078	.041	.090	.055	.029	.052	.032	.017	.017	.011	.006	
7.0	.144	.083	.041	.124	.072	.036	.086	.051	.025	.050	.030	.015	.016	.010	.005	
8.0	.138	.078	.036	.119	.067	.032	.082	.047	.023	.048	.028	.013	.015	.009	.004	
9.0	.132	.073	.033	.114	.063	.029	.079	.044	.020	.046	.026	.012	.015	.009	.004	
10.0	.126	.069	.030	.109	.060	.026	.075	.042	.019	.044	.025	.011	.014	.008	.004	

C Range: 0 - 360DEG
 C Interval: 15.0DEG
 Test Speed: HIGH
 Temperature:25.3DEG
 Operators:ZZJ
 Test Date:2014-12-17

γ Range: 0 - 180DEG
 γ Interval: 1.0DEG
 Test System:EVERFINE GO-2000B_V1 SYSTEM V2.0.291
 Humidity:65.0%
 Test Distance:7.610m [K=1.0775]
 Remarks:

UGR(Unified Glare Rating) Table

Test:U:219.7V I:0.1906A P:41.05W PF:0.9804 Lamp Flux:4242.75x1 lm		
NAME: LED Street Light	TYPE:LED	WEIGHT:5.55Kg
SPEC.:C470SP-Q2-P-03A 230V50HZ	DIM.: 495*300*107mm	SERIAL No.:1
MFR.: AOK	SUR.:79mm*230mm	PROTECTION ANGLE:

ceiling/cavity	0.7	0.7	0.5	0.5	0.3	0.7	0.7	0.5	0.5	0.3
walls	0.5	0.3	0.5	0.3	0.3	0.5	0.3	0.5	0.3	0.3
working plane	0.2	0.2	0.2	0.2	0.2	0.2	0.2	0.2	0.2	0.2
Room dimensions	Viewed crosswise					Viewed endwise				
x = 2H y = 2H	29.3	30.8	29.5	31.0	31.2	20.8	22.3	21.1	22.6	22.8
3H	31.8	33.2	32.1	33.5	33.8	20.6	22.0	20.9	22.3	22.6
4H	32.0	33.4	32.3	33.6	33.9	20.6	21.9	20.9	22.2	22.4
6H	31.9	33.2	32.3	33.5	33.8	20.5	21.8	20.8	22.0	22.3
8H	31.9	33.1	32.2	33.4	33.7	20.5	21.7	20.8	22.0	22.3
12H	31.8	33.0	32.2	33.3	33.6	20.5	21.6	20.8	21.9	22.3
4H 2H	29.3	30.6	29.6	30.9	31.2	23.0	24.3	23.3	24.6	24.9
3H	31.8	33.0	32.2	33.3	33.6	22.8	24.0	23.2	24.3	24.6
4H	32.0	33.0	32.4	33.4	33.7	22.7	23.8	23.1	24.1	24.5
6H	31.9	32.8	32.3	33.2	33.6	22.7	23.6	23.1	24.0	24.4
8H	31.8	32.7	32.3	33.1	33.5	22.7	23.5	23.1	23.9	24.3
12H	31.8	32.6	32.2	33.0	33.4	22.7	23.5	23.1	23.9	24.3
8H 4H	31.8	32.7	32.3	33.1	33.5	23.0	23.8	23.4	24.2	24.6
6H	31.8	32.5	32.2	32.9	33.3	22.9	23.7	23.4	24.1	24.5
8H	31.7	32.4	32.2	32.8	33.3	22.9	23.6	23.4	24.0	24.5
12H	31.7	32.2	32.2	32.7	33.2	23.0	23.5	23.5	24.0	24.5
12H 4H	31.8	32.6	32.2	33.0	33.4	22.9	23.7	23.4	24.1	24.6
6H	31.7	32.3	32.2	32.8	33.3	22.9	23.5	23.4	24.0	24.5
8H	31.7	32.2	32.2	32.7	33.2	22.9	23.5	23.4	23.9	24.4
Variations with the observer position at spacings:										
S = 1.0H	+ 0.2 / - 0.4					+ 2.3 / - 8.7				
1.5H	+ 1.4 / - 1.2					+ 1.7 / - 5.5				
2.0H	+ 2.3 / - 2.0					+ 5.4 / - 9.0				

CIE Pub.117 Corrected 4243 lm Total Lamp Luminous Flux. (8log(F/F0) = 5.0)

C Range: 0 - 360DEG
 C Interval: 15.0DEG
 Test Speed: HIGH
 Temperature:25.3DEG
 Operators:ZZJ
 Test Date:2014-12-17

γ Range: 0 - 180DEG
 γ Interval: 1.0DEG
 Test System:EVERFINE GO-2000B_V1 SYSTEM V2.0.291
 Humidity:65.0%
 Test Distance:7.610m [K=1.0775]
 Remarks:

UTILIZATION FACTORS TABLE

Test:U:219.7V I:0.1906A P:41.05W PF:0.9804 Lamp Flux:4242.75x1 lm		
NAME: LED Street Light	TYPE:LED	WEIGHT:5.55Kg
SPEC.:C470SP-Q2-P-03A 230V50HZ	DIM.: 495*300*107mm	SERIAL No.:1
MFR.: AOK	SUR.:79mm*230mm	PROTECTION ANGLE:

REFLECTANCE										
Ceiling	0.8	0.8	0.8	0.7	0.7	0.7	0.5	0.5	0.5	0
Walls	0.7	0.5	0.3	0.7	0.5	0.3	0.7	0.5	0.3	0
Working plane	0.2	0.2	0.2	0.2	0.2	0.2	0.2	0.2	0.2	0
ROOM INDEX	UTILIZATION FACTORS (PERCENT) $k(RI) \times RCR = 5$									
k = 0.60	56	44	37	55	44	37	54	43	37	30
0.80	66	54	47	65	54	47	63	53	46	39
1.00	75	63	56	74	63	56	71	64	55	48
1.25	82	71	64	81	71	64	78	69	63	55
1.50	87	77	70	86	76	70	83	75	69	61
2.00	95	86	80	93	85	79	89	82	77	69
2.50	99	91	85	97	90	84	93	87	82	74
3.00	102	95	90	100	94	89	96	91	87	78
4.00	106	101	96	104	99	95	100	96	92	83
5.00	109	104	100	106	102	99	102	98	95	86
ROOM INDEX	UF(total)									Direct
According to DIN EN 13032-2 2004			Suspended				SHRNOM = 1.25			

C Range: 0 - 360DEG
 C Interval: 15.0DEG
 Test Speed: HIGH
 Temperature:25.3DEG
 Operators:ZZJ
 Test Date:2014-12-17

γ Range: 0 - 180DEG
 γ Interval: 1.0DEG
 Test System:EVERFINE GO-2000B_V1 SYSTEM V2.0.291
 Humidity:65.0%
 Test Distance:7.610m [K=1.0775]
 Remarks:

ISOCANDELA DIAGRAM

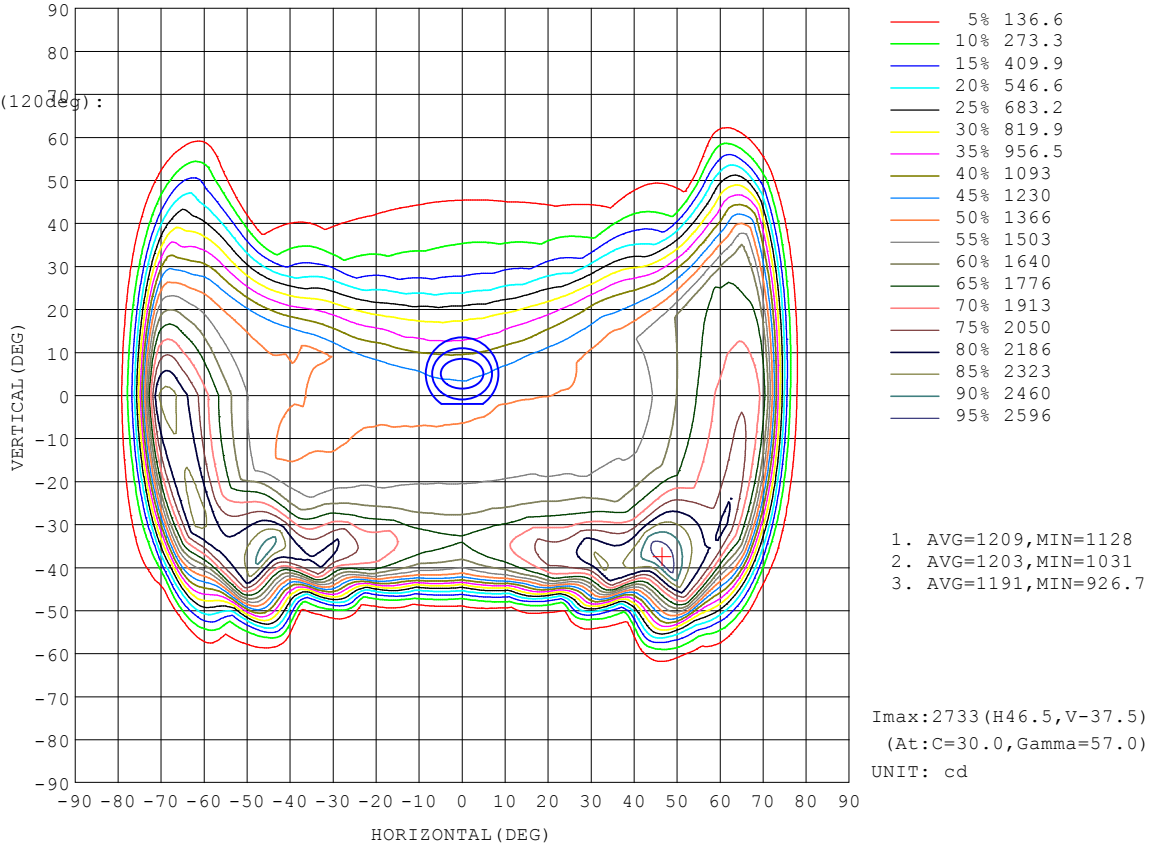
Test:U:219.7V I:0.1906A P:41.05W PF:0.9804 Lamp Flux:4242.75x1 lm		
NAME: LED Street Light	TYPE:LED	WEIGHT:5.55Kg
SPEC.:C470SP-Q2-P-03A 230V50HZ	DIM.: 495*300*107mm	SERIAL No.:1
MFR.: AOK	SUR.:79mm*230mm	PROTECTION ANGLE:

Conical surface Flux(90deg):

2199.4 lm
%lum = 51.8%
%lamp = 51.8%

Conical surface Flux(120deg):

3316.1 lm
%lum = 78.2%
%lamp = 78.2%



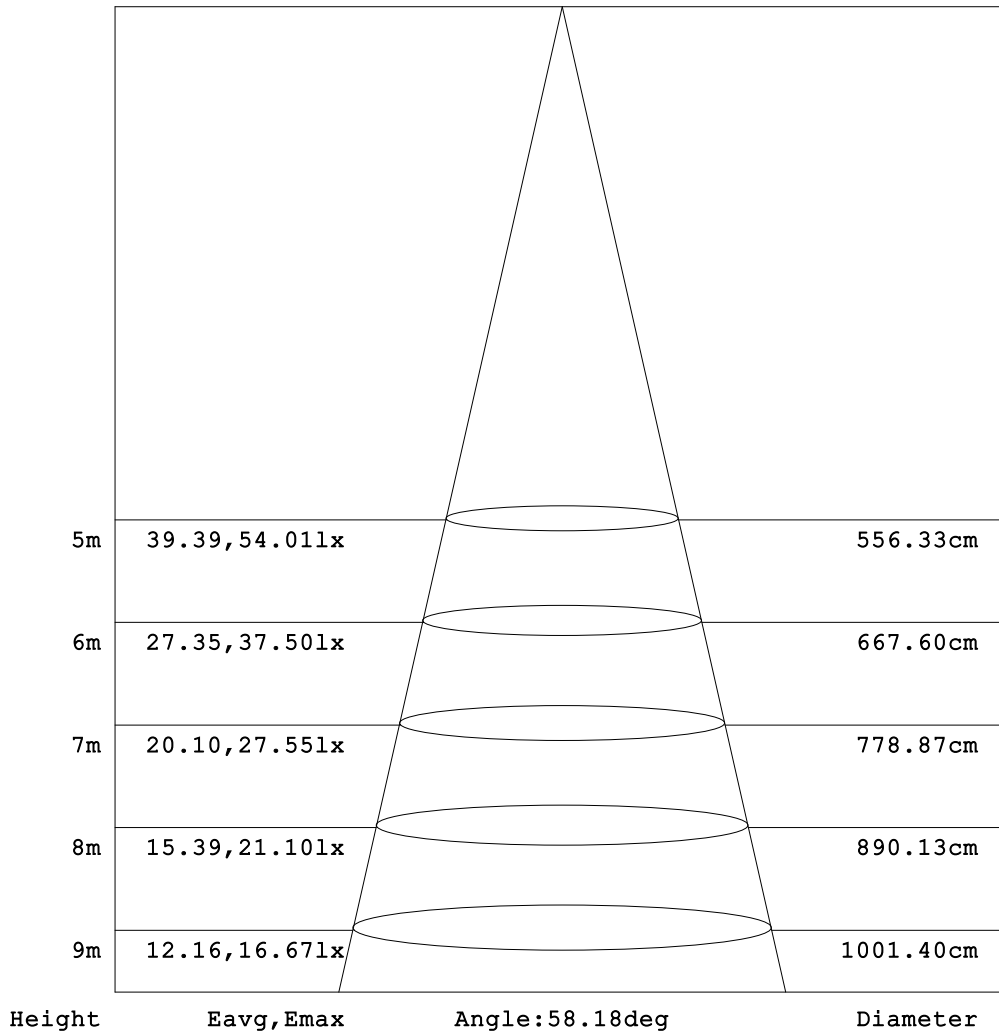
C Range: 0 - 360DEG
C Interval: 15.0DEG
Test Speed: HIGH
Temperature:25.3DEG
Operators:ZZJ
Test Date:2014-12-17

γ Range: 0 - 180DEG
γ Interval: 1.0DEG
Test System:EVERFINE GO-2000B_V1 SYSTEM V2.0.291
Humidity:65.0%
Test Distance:7.610m [K=1.0775]
Remarks:

AAI Figure

Test:U:219.7V I:0.1906A P:41.05W PF:0.9804 Lamp Flux:4242.75x1 lm		
NAME: LED Street Light	TYPE:LED	WEIGHT:5.55Kg
SPEC.:C470SP-Q2-P-03A 230V50HZ	DIM.: 495*300*107mm	SERIAL No.:1
MFR.: AOK	SUR.:79mm*230mm	PROTECTION ANGLE:

Flux out:1031 lm



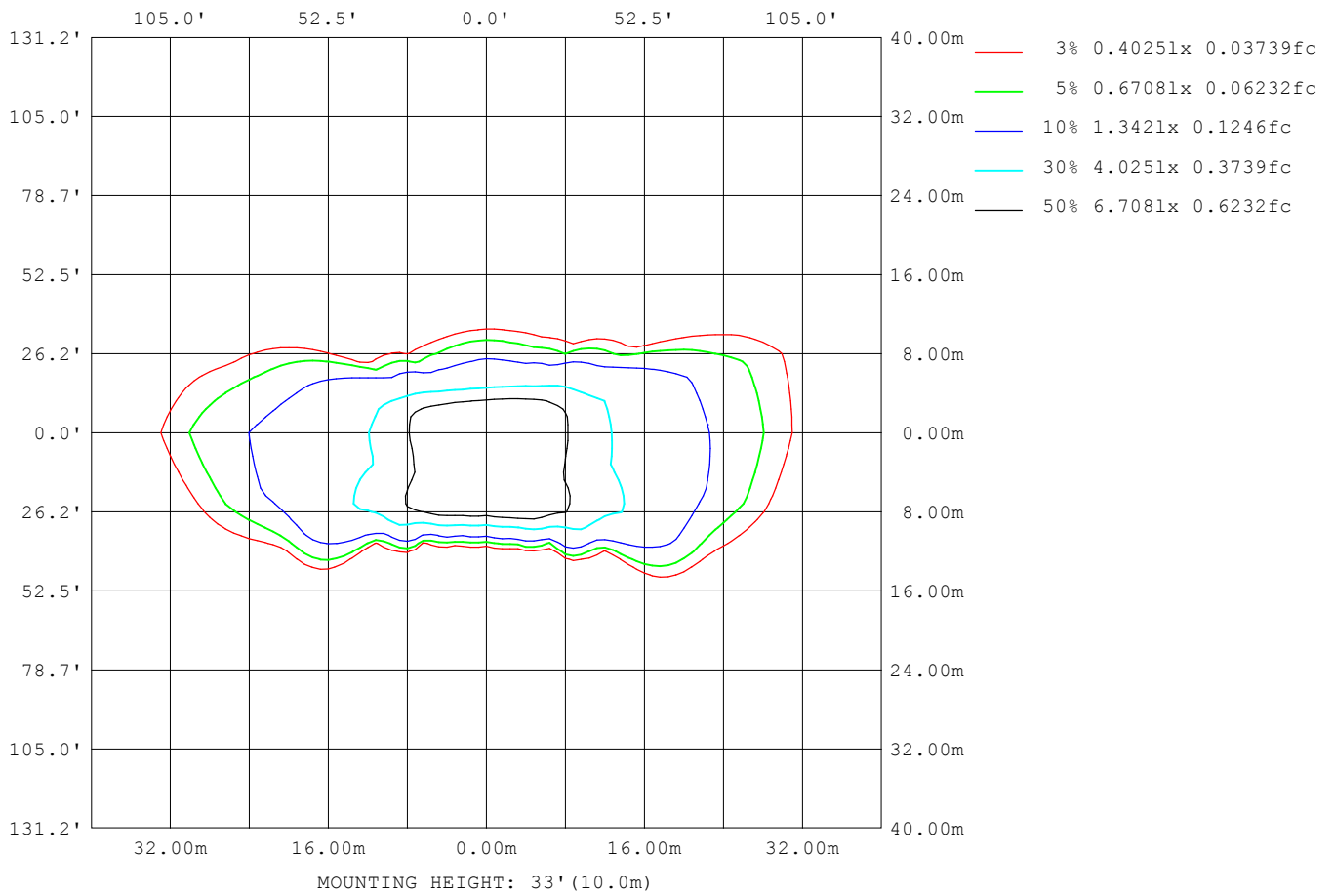
Note:The Curves indicate the illuminated area and the average illumination when the luminaire is at different distance.

C Range: 0 - 360DEG
 C Interval: 15.0DEG
 Test Speed: HIGH
 Temperature:25.3DEG
 Operators:ZZJ
 Test Date:2014-12-17

γ Range: 0 - 180DEG
 γ Interval: 1.0DEG
 Test System:EVERFINE GO-2000B_V1 SYSTEM V2.0.291
 Humidity:65.0%
 Test Distance:7.610m [K=1.0775]
 Remarks:

ISOLUX DIAGRAM

Test:U:219.7V I:0.1906A P:41.05W PF:0.9804 Lamp Flux:4242.75x1 lm		
NAME: LED Street Light	TYPE:LED	WEIGHT:5.55Kg
SPEC.:C470SP-Q2-P-03A 230V50HZ	DIM.: 495*300*107mm	SERIAL No.:1
MFR.: AOK	SUR.:79mm*230mm	PROTECTION ANGLE:



C Range: 0 - 360DEG
 C Interval: 15.0DEG
 Test Speed: HIGH
 Temperature:25.3DEG
 Operators:ZZJ
 Test Date:2014-12-17

γ Range: 0 - 180DEG
 γ Interval: 1.0DEG
 Test System:EVERFINE GO-2000B_V1 SYSTEM V2.0.291
 Humidity:65.0%
 Test Distance:7.610m [K=1.0775]
 Remarks:

LED Avg.L Report

Test:U:219.7V I:0.1906A P:41.05W PF:0.9804 Lamp Flux:4242.75x1 lm		
NAME: LED Street Light	TYPE:LED	WEIGHT:5.55Kg
SPEC.:C470SP-Q2-P-03A 230V50HZ	DIM.: 495*300*107mm	SERIAL No.:1
MFR.: AOK	SUR.:79mm*230mm	PROTECTION ANGLE:

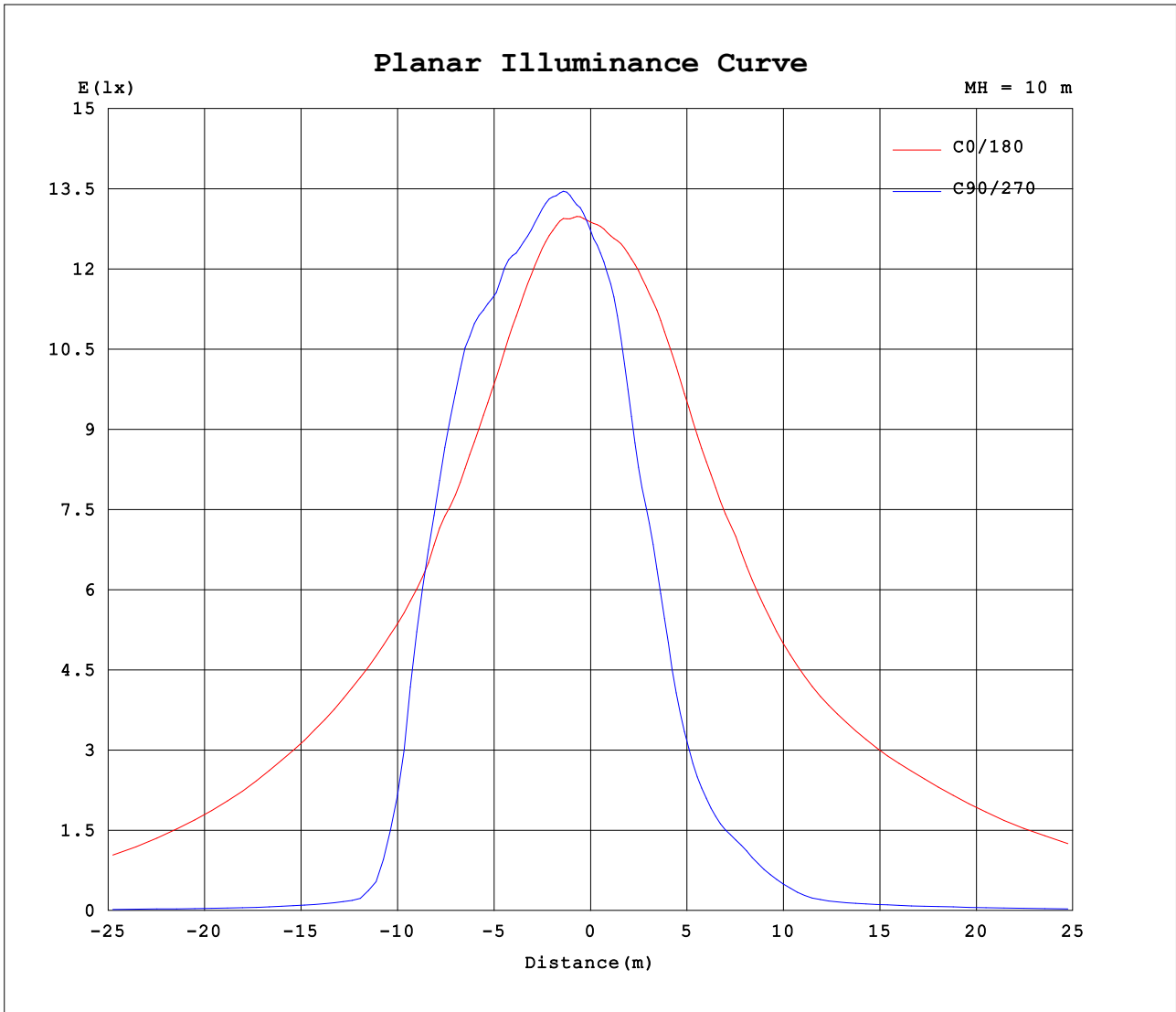
AvgL	cd/m2
L_0~180 (65) av	50443
L_0~180 (75) av	27552
L_0~180 (85) av	1049
L_90~270 (65) av	1407
L_90~270 (75) av	1844
L_90~270 (85) av	4223
L_45 (65) av	1482
L_45 (75) av	1564
L_45 (85) av	2470

Standard: GB/T 29293-2012

C Range: 0 - 360DEG
 C Interval: 15.0DEG
 Test Speed: HIGH
 Temperature:25.3DEG
 Operators:ZZJ
 Test Date:2014-12-17

γ Range: 0 - 180DEG
 γ Interval: 1.0DEG
 Test System:EVERFINE GO-2000B_V1 SYSTEM V2.0.291
 Humidity:65.0%
 Test Distance:7.610m [K=1.0775]
 Remarks:

Planar Illuminance Curve



C Range: 0 - 360DEG
 C Interval: 15.0DEG
 Test Speed: HIGH
 Temperature: 25.3DEG
 Operators: ZZJ
 Test Date: 2014-12-17

γ Range: 0 - 180DEG
 γ Interval: 1.0DEG
 Test System: EVERFINE GO-2000B_V1 SYSTEM V2.0.291
 Humidity: 65.0%
 Test Distance: 7.610m [K=1.0775]
 Remarks:

LUMINOUS DISTRIBUTION INTENSITY DATA

Test:U:219.7V I:0.1906A P:41.05W PF:0.9804 Lamp Flux:4242.75x1 lm		
NAME: LED Street Light	TYPE:LED	WEIGHT:5.55Kg
SPEC.:C470SP-Q2-P-03A 230V50HZ	DIM.: 495*300*107mm	SERIAL No.:1
MFR.: AOK	SUR.:79mm*230mm	PROTECTION ANGLE:

Table--1

UNIT: cd

C (DEG) γ (DEG)	0	15	30	45	60	75	90	105	120	135	150	165	180	195	210	225	240	255	270
0	1288	1284	1282	1279	1278	1273	1273	1268	1268	1265	1265	1264	1288	1284	1282	1279	1278	1273	1273
5	1311	1327	1341	1346	1348	1345	1343	1335	1328	1317	1302	1281	1283	1262	1249	1232	1220	1209	1207
10	1342	1373	1391	1403	1403	1407	1400	1400	1385	1366	1342	1313	1297	1269	1229	1182	1125	1079	1072
15	1358	1394	1417	1432	1456	1451	1442	1443	1435	1403	1371	1338	1313	1279	1203	1065	939	881	878
20	1364	1403	1437	1460	1478	1493	1495	1486	1456	1425	1391	1357	1330	1304	1147	929	813	726	714
25	1372	1409	1456	1502	1553	1602	1583	1588	1529	1455	1417	1354	1333	1325	1069	823	623	507	496
30	1389	1418	1470	1574	1694	1730	1714	1696	1650	1531	1415	1335	1331	1356	994	656	421	353	353
35	1414	1444	1517	1713	1943	1883	1761	1816	1902	1684	1431	1341	1351	1377	925	447	292	267	275
40	1447	1477	1579	1975	2108	1750	1503	1643	1982	2024	1483	1334	1376	1360	799	287	220	217	221
45	1518	1548	1740	2298	1968	1011	608	809	1736	2236	1642	1362	1414	1340	579	185	148	139	142
50	1644	1685	2153	2347	728	148	87.0	110	396	2185	2211	1483	1509	1321	354	115	85.6	77.2	78.7
55	1793	1854	2697	1757	100	72.0	63.7	64.3	79.4	820	2549	1686	1699	1309	170	67.8	65.5	67.7	68.5
60	1940	2002	2636	206	67.4	58.2	52.4	52.2	55.0	113	2411	2000	1971	1283	91.4	56.7	60.7	66.6	67.9
65	2025	2231	2047	82.2	54.0	53.1	49.8	48.6	47.3	60.8	1522	2398	2239	1180	54.5	51.3	57.9	65.6	69.1
70	1845	1568	480	49.3	47.7	53.0	47.6	48.2	43.0	42.0	188	1675	2367	914	43.4	46.0	53.1	61.5	65.4
75	530	186	63.9	41.5	43.6	47.2	41.1	42.4	38.4	37.5	44.1	185	896	446	35.6	41.0	47.7	55.5	54.4
80	48.1	47.3	33.2	35.5	33.6	35.4	28.7	31.8	30.3	29.5	29.5	35.4	75.7	48.9	28.0	32.8	40.3	43.2	50.1
85	10.0	19.7	25.4	21.3	24.5	26.9	26.6	24.9	23.2	18.2	23.5	16.1	8.25	20.6	18.6	24.3	35.8	39.6	47.0
90	0.57	6.54	13.3	12.8	17.7	23.5	22.6	22.4	18.0	12.0	11.6	4.23	0.16	3.55	10.5	15.8	23.4	29.2	36.3
95	1.14	3.06	6.99	8.57	11.4	20.1	17.0	17.7	10.5	7.72	6.98	5.04	0.68	2.53	6.39	9.67	13.0	17.5	26.3
100	1.91	2.97	8.20	9.30	8.68	15.9	14.7	15.1	7.94	6.78	11.3	3.74	1.46	3.04	6.29	9.53	12.2	15.9	18.0
105	2.72	3.05	4.93	9.49	8.46	9.39	9.52	9.03	7.84	7.56	6.62	3.36	2.34	3.96	7.69	11.2	15.0	23.2	25.5
110	3.43	2.97	4.30	7.06	8.48	9.00	9.35	8.61	7.54	7.25	4.75	3.35	3.22	3.94	7.79	11.9	14.5	19.9	20.7
115	3.96	2.68	3.91	5.91	8.42	9.36	8.98	8.38	7.36	6.26	4.55	3.33	3.92	4.18	7.41	9.78	11.4	14.3	15.0
120	4.07	2.86	3.37	5.21	7.29	7.59	7.27	6.85	6.28	5.69	4.38	3.40	4.21	4.51	7.07	9.14	9.76	11.3	11.5
125	4.01	2.90	2.79	4.47	5.96	6.36	6.31	5.83	5.14	4.84	3.65	3.39	4.26	4.67	6.19	8.50	9.29	10.4	10.1
130	3.74	2.85	2.26	3.74	4.61	5.09	5.14	4.70	4.18	4.01	2.88	3.32	4.18	4.66	5.16	7.53	8.86	9.53	9.16
135	3.54	2.84	2.09	2.62	3.58	4.16	4.31	3.95	3.44	2.88	2.55	3.27	3.99	4.43	4.74	5.96	8.12	8.83	8.47
140	3.43	2.84	2.18	2.07	2.44	3.02	3.21	2.99	2.57	2.40	2.50	3.24	3.81	4.15	4.56	5.11	6.35	7.53	7.64
145	3.36	2.88	2.32	1.92	1.98	2.18	2.29	2.27	2.25	2.26	2.57	3.24	3.69	3.92	4.31	4.79	5.22	5.79	5.96
150	3.32	2.93	2.46	2.05	1.87	1.90	1.98	2.05	2.16	2.34	2.69	3.24	3.59	3.77	4.04	4.53	4.77	5.02	5.05
155	3.30	2.98	2.62	2.27	2.08	2.02	2.05	2.16	2.30	2.49	2.83	3.24	3.51	3.68	3.86	4.19	4.52	4.64	4.60
160	3.30	3.06	2.77	2.51	2.36	2.33	2.35	2.40	2.53	2.71	2.99	3.27	3.46	3.62	3.75	3.95	4.21	4.35	4.33
165	3.32	3.15	2.95	2.75	2.67	2.67	2.67	2.71	2.81	2.97	3.15	3.31	3.44	3.57	3.67	3.79	3.96	4.07	4.07
170	3.37	3.26	3.13	3.02	2.98	2.99	2.99	3.01	3.12	3.24	3.32	3.39	3.44	3.53	3.61	3.68	3.78	3.87	3.87
175	3.42	3.38	3.32	3.28	3.29	3.32	3.31	3.33	3.37	3.42	3.44	3.45	3.46	3.52	3.57	3.62	3.67	3.72	3.71
180	3.46	3.48	3.48	3.50	3.53	3.56	3.57	3.57	3.58	3.55	3.53	3.48	3.47	3.47	3.49	3.49	3.53	3.56	3.57

C Range: 0 - 360DEG
 C Interval: 15.0DEG
 Test Speed: HIGH
 Temperature:25.3DEG
 Operators:ZZJ
 Test Date:2014-12-17

γ Range: 0 - 180DEG
 γ Interval: 1.0DEG
 Test System:EVERFINE GO-2000B_V1 SYSTEM V2.0.291
 Humidity:65.0%
 Test Distance:7.610m [K=1.0775]
 Remarks:

LUMINOUS DISTRIBUTION INTENSITY DATA

Test:U:219.7V I:0.1906A P:41.05W PF:0.9804 Lamp Flux:4242.75x1 lm		
NAME: LED Street Light	TYPE:LED	WEIGHT:5.55Kg
SPEC.:C470SP-Q2-P-03A 230V50HZ	DIM.: 495*300*107mm	SERIAL No.:1
MFR.: AOK	SUR.:79mm*230mm	PROTECTION ANGLE:

Table--2

UNIT: cd

C (DEG) γ (DEG)	285	300	315	330	345														
0	1268	1268	1265	1265	1264														
5	1210	1225	1239	1255	1269														
10	1093	1146	1203	1256	1291														
15	911	1002	1131	1242	1302														
20	762	882	1026	1225	1314														
25	552	708	937	1202	1347														
30	387	512	811	1179	1394														
35	290	355	636	1155	1452														
40	218	259	449	1087	1489														
45	151	180	302	968	1537														
50	82.0	108	196	759	1608														
55	67.7	68.4	113	521	1691														
60	66.0	62.1	67.8	290	1753														
65	64.8	59.3	56.2	139	1745														
70	60.2	54.0	49.6	56.3	1635														
75	53.7	47.3	41.9	41.6	875														
80	42.0	39.9	32.8	32.7	73.4														
85	38.3	34.2	22.3	19.0	28.6														
90	29.7	22.8	13.8	10.2	5.60														
95	16.7	12.5	8.48	4.77	1.95														
100	14.7	11.0	7.98	5.20	2.80														
105	19.6	12.8	8.97	6.29	3.75														
110	18.6	12.9	9.58	6.63	3.83														
115	13.8	10.3	7.95	6.20	3.98														
120	10.7	8.48	7.43	6.10	4.31														
125	9.61	7.98	7.23	5.86	4.49														
130	8.88	7.63	6.96	5.19	4.37														
135	8.30	7.36	6.08	4.59	4.14														
140	7.34	6.29	5.21	4.22	3.94														
145	5.94	5.27	4.55	4.01	3.75														
150	5.08	4.61	4.25	3.85	3.62														
155	4.60	4.33	4.02	3.72	3.54														
160	4.29	4.09	3.84	3.64	3.49														
165	4.03	3.90	3.74	3.61	3.48														
170	3.83	3.76	3.70	3.61	3.48														
175	3.70	3.68	3.67	3.61	3.52														
180	3.57	3.57	3.55	3.53	3.48														

C Range: 0 - 360DEG
 C Interval: 15.0DEG
 Test Speed: HIGH
 Temperature:25.3DEG
 Operators:ZZJ
 Test Date:2014-12-17

γ Range: 0 - 180DEG
 γ Interval: 1.0DEG
 Test System:EVERFINE GO-2000B_V1 SYSTEM V2.0.291
 Humidity:65.0%
 Test Distance:7.610m [K=1.0775]
 Remarks: